

## WML LED

Project Name:

Type:



CASAMBI

## APPLICATION

The half sphere wall sconce down light is ideal for walkways, building exterior walls, parking areas, entrances, underpasses, loading docks and recreation areas. Wall mounting height requires between 8 feet and 15 feet below.

## FEATURES:

- Full cut-off LED wall pack.
- Die-cast aluminum housing with UV stabilized powder coated finish.
- Architectural dark bronze finish standard.
- Down only and Up/Down distribution available.
- Optional occupancy sensor, EM, photocell.

## MOUNTING:

- Wall mount (quick mount plate included).
- Easily installed on recessed junction boxes or direct mounts to the wall with feed thru conduit access.

## LENS &amp; COVER:

- Low glare providing visual comfort.
- Impact resistant tempered clear glass lens.
- Down only: Forward and Wide Throw available.
- Up/Down: Wide Throw for down only.

## LED:

- CRI 70+ (optional 80CRI)
- Color Temperature: 3000/4000/5000(K)
- Down only: up to 119lm/W
- Up/Down: up to 151lm/W
- Field adjustable wattage for down unit only, default 72W.

## ELECTRICAL:

- Input Voltage: 120V-277V, 50/60Hz (optional 480V available with step down transformer)
- Optional: 10KV surge protector
- Operating temperature: -40°F (-40°C) ~ 104°F (40°C)

## LISTING:

- UL/CUL listed for wet location.
- Listed to UL 1598 and UL 8750.
- DLC premium listed. <sup>1</sup>
- Certified to ANSI C136.31-2010, 3.0G Vibration Testing.
- 5 years limited warranty.
- BAA compliant (Buy American Act).
- BABA compliant (Build America Buy America)

## CONFIGURATIONS

Model	Input Watts	Lumen Output	Lumen / Watts
WML-UD-6LED	5.6W	850 lm	151 lm/W
WML-UD-40LED	40W	6056 lm	

\* Based on the highest wattage at 5000K

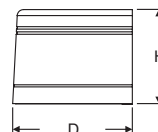
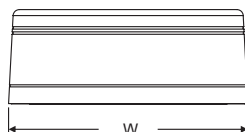
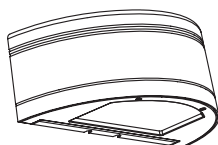
## MS (sensor) FACTORY SETTING (TABLE 1)

Detection Area	100%
Hold-time	5 min
Daylight sensor	Disable
Stand-by period	30 min
Stand-by dimming level	50%

\* See a separate attachment to find more setting options.

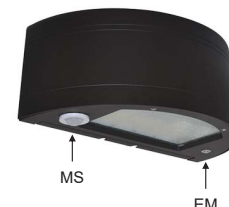
## CONFIGURATIONS

Model	Input Watts	Lumen Output (3000K)	Lumen / Watts (3000K)	Lumen Output (4000K)	Lumen / Watts (4000K)	Lumen Output (5000K)	Lumen / Watts (5000K)
WML-SLED	25W	2983 lm	121.78 lm/W	3137 lm	136 lm/W	3077 lm	122.87 lm/W
	45W	5419 lm		5857 lm		5535 lm	
	65W	7855 lm		8568 lm		7992 lm	



Height: 7.1 (180)  
Width: 18.1 (460)  
Depth: 9.25 (235)

\* All dimensions are in inches (millimeters).



WML-UD uplight

## WML LED

## ORDERING INFORMATION

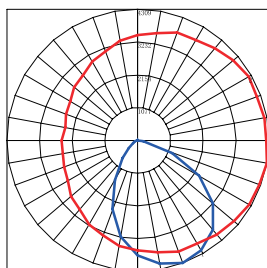
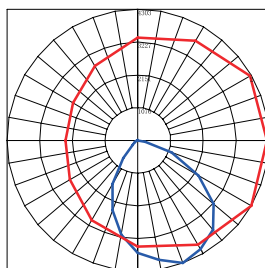
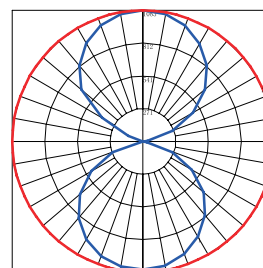
EXAMPLE: WML-FT-SLED-3T-UNV-BZ

MODEL	LED		COLOR TEMP.		VOLTAGE		CRI		FINISH	
WML-FT (Forward Throw) WML-WT (Wide Throw)	SLED	Selectable 25/45/65W LED	3T	3000/4000/5000K Selectable	UNV HV	120-277V (Std.) 480V (with Step down transformer)	(Blank) C8	70 CRI 80 CRI	BZ	Dark Bronze RAL#7022 (Std.)
			-30K -40K -50K	3000K 4000K 5000K					* Non-standard finish with extra charge.	
			* When there is an EM option, please select CCT.							
WML-UD (Up & Down)	6LED 40LED	6W LED (Up & Down) 40W LED (Up & Down)	-30K -40K -50K	3000K 4000K 5000K						

OPTIONS	
PC3	With Photocell - Button Type 120-277V
MS	Occupancy Sensor with Daylight, adjustable via DIP switch <sup>2</sup>
RC-100	Remote control for MS
EM8	8W Emergency Battery Backup
CWEM10	10W EM Pack for Cold Weather (-20°C ~ 55°C)
SP10	10Kv surge protector
BAA	BAA(Buy American Act) compliant
BABA	BABA(Build America Buy America) compliant
MG	Marine Grade Finish
CASAMBI	Contact factory for CASAMBI READY options

## NOTES:

- DesignLights Consortium (DLC) qualified product. Not all versions of this product may be DLC qualified. Please check the DLC Qualified Products List at [www.designlights.org/QPL](http://www.designlights.org/QPL) to confirm which versions are qualified.
- Refer to Table 1 and a separate attachment to find more information.

Forward Throw  
(FT)Wide Throw  
(WT)Up & Down  
(UD)50% UP / 50% DOWN  
distribution