

RONDO4-HC90

| | |
|---------------|--|
| Project Name: | |
| Type: | |



CASAMBI

APPLICATION

The RONDO4-HC90 creates a design statement for contemporary and traditional architectural interiors. The angular luminaire is decorative and suitable for a multiple of applications like offices, retails, museums and galleries as well as high ceiling application such as lobbies.

FEATURE:

- Extruded aluminum.
- 90 degree luminaire in 2'x2'.
- Down, up, and up&down luminaire is available.

MOUNTING:

- Pendant.

LED:

- High quality array LEDs.
- LM80
- Color Temperature: 2700/3000/3500/4000/5000 (K)
- Color Rendering Index: > 80 (optional >90).
- Nominal Lamp Life: 100,000 hours.
- Reported L70 hours: +60,000 (55°C).

ELECTRICAL:

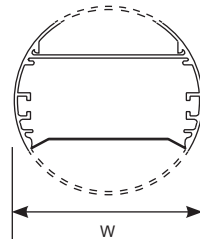
- High power factor electronic driver, operate from a 120 ~ 277 Vac input range, 50 / 60 Hz.
- Features included over voltage protection, surge, short circuit protection and over load protection.
- Power Factor: typical > 0.95, THD <20, meets Class1 or Class 2 circuit.
- 0-10V dimmable driver as standard.
- 0-10VDC dimming 1%~100%.
- Operating temperature: -4°F (-20°C) ~ 122°F (50°C).

FINISH:

- Standard powder-coat textured white painted finish on exposed trim, consult factory for custom colors.
- Comes with snap-in acrylic lens as standard.

LISTING:

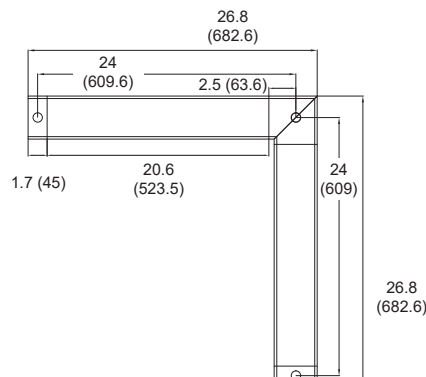
- UL / CUL listed.
- UL listed for dry & damp location.
- Assembled in USA (optional).
- BAA compliant (optional).
- Trade Agreements Act compliant (optional).
- 5 years limited warranty.
- 7 or 10 years limited warranty. (optional) ³
- Bluetooth Mesh System available, please contact factory for more information.



Specifications: RONDO4

Width: 4 Dia. (101)

All dimensions are in inches (millimeters).



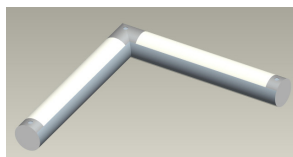
RONDO4-HC90

CONFIGURATIONS

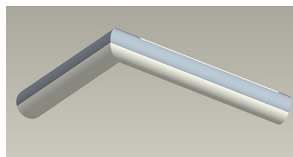
| Series | Size | Model # | AC Input | Lumen Output (Down) | | Lumen Efficiency |
|-------------|------|---------|----------|---------------------------------------|-----------|------------------|
| RONDO4-HC90 | 2x2 | 18L | 19.8W | 2397.8 lm (100%) | 2397.8 lm | 121.1 lm/W |
| | | 27L | 29.7W | 3596.6 lm (100%) | 3596.6 lm | 121.1 lm/W |
| | | 36L | 39.6W | 4795.5 lm (100%) | 4795.5 lm | 121.1 lm/W |
| | | 48L | 52.8W | 6394 lm (100%) | 6394 lm | 121.1 lm/W |
| | | 54L | 59.4W | 7193.3 lm (100%) | 7193.3 lm | 121.1 lm/W |
| | | 18L/18L | 39.6W | 2133.1 lm (46.8%) / 2424.8 lm (53.2%) | 4557.9 lm | 115.1 lm/W |
| | | 27L/27L | 59.4W | 3210.8 lm (46.8%) / 3649.9 lm (53.2%) | 6860.7 lm | 115.1 lm/W |
| | | 36L/18L | 59.4W | 3942.9 lm (60.4%) / 2585.1 lm (39.6%) | 6528 lm | 109.9 lm/W |
| | | 48L/18L | 72.6W | 5549.4 lm (66.7%) / 2770.6 lm (33.3%) | 8320 lm | 114.6 lm/W |
| | | 48L/27L | 82.5W | 5233 lm (60.7%) / 3388.2 lm (39.3%) | 8621.2 lm | 104.5 lm/W |
| | | 54L/18L | 79.2W | 5954.5 lm (71.4%) / 2385.2 lm (28.6%) | 8339.7 lm | 105.3 lm/W |

WEIGHT

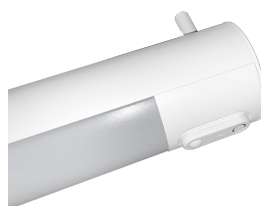
| Item | lbs | kg |
|-------|-------|------|
| RHC90 | 10.06 | 4.56 |



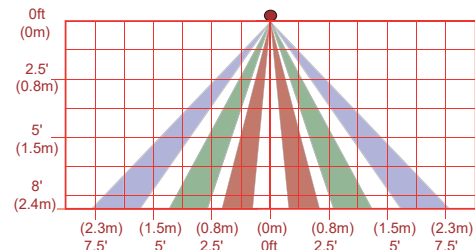
RONDO4-HC90-22 UPLIGHT



RONDO4-HC90-22 DOWN



Lutron Vive Integral
fixture control installation



AMS coverage pattern (side view)

* The coverage shown in the diagram is maximum.
AMS is designed to detect small motion when mounted within 6' occupants.

ORDERING INFORMATION

EXAMPLE: RONDO4-HC90-22-D27L-40K-UNV

| MODEL | SHAPE | | SIZE | | LED Downlight (per/4ft section) | | LED Uplight (per/4ft section) | | COLOR TEMP. | |
|--------|-------|-----------|------|-------|--------------------------------------|--|----------------------------------|--|---|--|
| RONDO4 | HC90 | 90 Degree | 22 | 2'x2' | D18L D27L D36L D48L D54L | 18W LED (665 lm/ft) 27W LED (825 lm/ft) 36W LED (1140 lm/ft) 48W LED (1371 lm/ft) 54W LED (1614 lm/ft) | /NL /U18L /U27L | Zero Uplight 18W LED (683 lm/ft) 27W LED (976 lm/ft) | (Blank) -27K -30K -35K -40K -50K | Leave blank if you wish to have different CCT for up and down, and fill out next section. 2700K 3000K 3500K 4000K 5000K |


| SEPARATE CCT. | | CRI | | MOUNTING | | VOLTAGE | | EM SECTION ¹ | | FIXTURE FINISH | |
|---------------|--|---------|---------------------------------|----------|---------|------------|-------------------------------|------------------------------|--|--------------------------------|---|
| (Blank) | Leave blank if you chose to have the same CCT for up and down in the previous section. | (Blank) | 80+ CRI 90+ CRI ⁶ | (Blank) | Pendant | UNV 347 | 120-277V 347V ⁸ | (Blank) 1SE 2SE xSE | None EM 1 Section 2 Section x Section | (Blank) *BK **CC *AMB | Matte White RAL#9003 (Std.) Black RAL #9011 Custom Color Anti-Microbial Coating (Matte Skye White) |

¹ Non-standard finish with extra charge.
⁸ Additional charge & set up fee.

RONDO4-HC90

| CORD FINISH | | CANOPY FINISH | | CEILING TYPE | | SUSPENSION LENGTH | |
|--|-----------------------|--------------------------------|--|----------------------------|---|------------------------------|--|
| (Blank) *BKC | White (Std.) Black | (Blank) *BC *SC **CSS | White (Std.) Black Canopy Silver Canopy Custom Canopy Color (White is Std.) | X1 X2 X3 X4 X5 | 15/16" grid T-bar ceiling Hard ceiling Sloped Hard ceiling 9/16" T-bar ceiling 9/16" Screw Slot ceiling | AC48 AC96 ST24 ST48 | Adjustable Aircraft Cable Canopy 48"L Adjustable Aircraft Cable Canopy 96"L Stem Canopy 24"L Stem Canopy 48"L * add "FC" at the end of stem length for field cuttable stem kit (Ex) ST48FC) |
| * Non-standard finish with extra charge. ** Additional charge & set up fee. | | | | | | | |

| LED DRIVER | | | |
|---|--|--|--|
| (Blank) UDSD SP ES566 SD40 SDXX PHSR PHDL ED560 TD30/70 TDXX/YY | 0-10V dim to 1% (Std.) (dim both uplight and downlight simultaneously) Separate Dimming Control of Uplight and Downlight (0-10V dim to 1%) ^{5,7} Separate Power Control for Uplight and Downlight eidoLED SOLOdrive Natural Dimming to dark, 0-10V, 100% ~ 0.1% dim 40% / 100% Bi-Level Step dim XX% / 100% Bi-Level Step dim (Specify XX : 10% ~ 70%) Philips Xitanium Sensor-Ready, Dali 5%~100% dim. Philips Xitanium DALI driver, Dim to 5% eidoLED LightShape DALI dim to dark, 0.1% ~ 100% 30% / 70% / 100% Tri-Level Step dim XX% / YY% / 100% Tri-Level Step dim (Specify XX, YY : 10% ~ 70%) | LDE1 ELV TRIOT DIMG DMX DLM LTEA2W TDM BLT | Hi-lume 1% EcoSystem LED driver with Soft-on, Fade-to-Black dimming technology, 100%~1% dim ELV compatible (reverse-phase or trailing-edge), (120V only) Tridonic IoT ready, 1-100% dim via Smart Module Interface (SMI), automated dimming/lighting controls via Enlighted Sensor Interface Tri-mode dimming (Triac, ELV, 0-10V) DMX512 control system (Only available with RGB+W option) Wattstopper's DLM interface (Only available with RGB+W option) Hi-lume 1% 2-wire LED driver (120V forward phase only) Triac Dim. (120V only) Bluetooth Mesh System (contact factory for more information) |

| OPTIONS | | LIGHTING CONTROL SYSTEM | |
|---|--|---|--|
| EMG8 EMG15 EMG20 EMG25 EMC GTD GTD10DIM ARRA BAA TAA LSR-301-S LSR-301-P O7W O10W AMS DPMS SO | 1296 LUMEN EM Battery Backup ⁹ 2430 LUMEN EM Battery Backup ⁹ 3240 LUMEN EM Battery Backup ⁹ 4050 LUMEN EM Battery Backup ⁹ CEC compliant EM ² Bodine Generator Transfer Device Bodine Generator Transfer Device (0-10VDC Dimmer Override) Assembled in USA for Buy American Act BAA(Buy American Act) and BABA(Build America Buy America) compliant Trade Agreements Act compliant Setup Remote Control for DPMS (Required for DPMS) Occupant Remote Control for DPMS Optional 7 Years Limited Warranty ³ Optional 10 Years Limited Warranty ³ Bluetooth Mesh Wireless Sensor: Occupancy/Daylight/0-10V Dimming ¹² Daylight Dimming Photo Sensor (0-10 VDC Control), (LSR-301-S required if FD-301 is installed) ¹¹ Dimming Wires connected to Sensor Only (available option on FS-205 non-Bluetooth AMS sensor only) ⁴ | LUTRON VIVE SU-5E RS-WS IFS105SE PPA102S CASAMBI | <Lutron Vive System Enabled>  Click Here! <Enlighted> Enlighted IoT ready 0-10V Indoor Micro sensor with occupancy/vacancy detection, daylight harvesting, thermal sensing, task tuning, and room and zone control, Bluetooth enabled (Must be ordered with TRIOT) ¹⁰ Enlighted Room controller providing basic control functions of a standard wall switch with preset dimming capability <Bluetooth> Bluetooth Mesh Wireless Sensor: Occupancy/Daylight/0-10V Dimming Bluetooth Powerpack (Consult factory for installation location) Contact factory for CASAMBI READY options |

NOTES:

- EM is installed in last 4' of luminaire sections. Separate section required 2SE or specified.
Must specify voltage, not available with 347V.
- Check with factory for more details.
- This limited warranty covers electrical parts only and does not apply to labor, equipment lease, or defect from improper installation or operation.
- Dimming wires provided and connected to sensor only, not for dimmer switch. (available with AMS and DPMS option)
- For separate dimming control, please be advised it may not be available when EM battery backup is added due to limited space. Please contact us for more information.
- Lumen per watt is around 15% less than standard CRI (80+).
- Can have up to 2 power feeds depending on the configuration.
- 347V cannot work with Emergency Battery Backup.
- Not available on 2ft housing due to space limitations.
- "RS-WS" option can be added if wish to have a wall switch, please see Enlighted Room. Controller in the separate attachment.
- Automatic on/off is not available. For automatic on/off, additional occupancy sensor is required or a manual on/off switch can be done.
- With TDM/ELV/SDXX/TDXX: Only available with line-voltage on/off occupancy sensor.

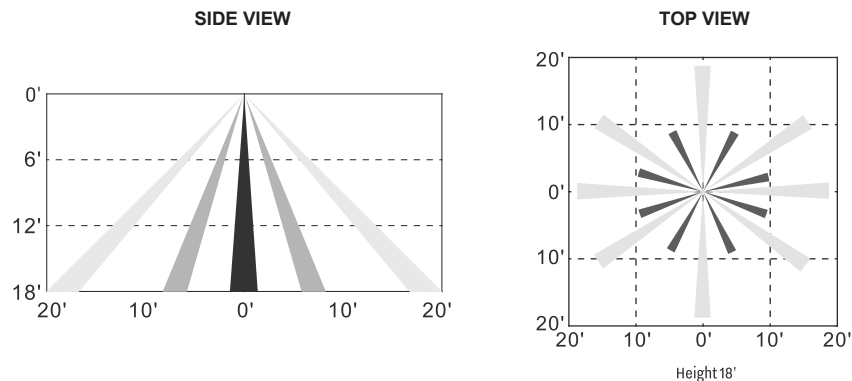
RONDO4-HC90

COMPATIBLE DIMMER SWITCH (TABLE 1)

| Model # | Brand | Compatible Dimmer Switch | |
|-------------------|---|--------------------------|--|
| (Blank) | - | <Leviton> | IllumaTech IP7 series |
| | | <Lutron> | Visit www.lutron.com/advance for a list of dimmers (Mark VII) that will work with this driver. |
| | | <Philips> | Sunrise : SR1200ZTUNV |
| ES566 | eldoLED SOLOdrive | <Busch-Jaeger> | 2112U-101 |
| | | <Jung> | 240-10 |
| | | <Leviton> | IllumaTech - IP710-DLX |
| | | <Lightoller Controls> | ZP600FAM120 |
| | | <Merten> | 5729 |
| | | <Pass & Seymour> | CD4FB-W |
| | | <Wattstopper> | DCLV1 |
| | | <Sensor Switch> | nIO EZ |
| | | <Synergy> | ISD BC |
| | | <ABB> | SD/S 2.16.1 |
| | | <Lutron> | Nova T: NTFTV Diva - DDTV-xx, NFTV GRAFIK Eye: GRX-TVI w GRX3503 Energy Savr Node: QSN-4T16-S TVM2 Module |
| | | <Crestron> | GLX-DIMFLV8, GLXP-DIMFLV8, GLPAC-DIMFLV4-*, GLPAC-DIMFLV8-*, GLPP-DIMFLVEX-PM, GLPP-1DIMFLV2EX-PM, GLPP-1DIMFLV3EX-PM, DIN-A08, DIN-4DIMFLV4, CLS-EXP-DIMFLV, CLCI-1DIMFLV2EX |
| ED560 | eldoLED DUALdrive | <Lunatone> | SS-LUNAT PS2 30mA SS-LUNAT Touch or BT SS-LUNAT Comm |
| LDE1 | Lutron Hi-lume 1% EcoSystem | <Lutron> | PowPak Dimming Modules: RMJ-ECO32-DV-B, FCJ/FCJS-ECO ^{1,2} Energi Savr Node (120V only): QSN-1ECO-S, QSN-2ECO-S GRAFIK Eye QS/Homeworks QS control unit (120V only): QSGRJ- E(wireless) QSGR- E Quantum Hub (120V only): QP2- _ _2C/4C/6C/8C Homeworks QS/myRoom Plus power module (120V only): LQSE-2ECO-D |
| PHSR ³ | Philips Xitanium Sensor-Ready | <Illumra> | <u>Single Rocker Self-Powered Light Switch (on/off, dim-up/down)</u> Illumra# ZBT-S1AWH Digi-Key# 1082-1033-ND <u>Dual Rocker Self-Powered Light Switch (on/off, dim-up/down, scene1,2)</u> Illumra# ZBT-S2AWH Digi-Key# 1082-1034-ND |
| TDM | KEYSTONE | <Lutron> | Diva DV-600P, SkyLark S-600P, Ariadni AY-600P, Ariadni TG-603P, Maestro MA-600 (Digital), Diva CFL/LED DVCL-153P, Satin Colors DVSC-600P-SW |
| | | <Leviton> | 6641, IllumaTech IPI06-1LX, ToggleTouch TGI06-1LW (Digital) |
| ELV | KEYSTONE | <Lutron> | MAELV-600BL (Digital), DVELV-300P, SkyLark SELV-300P |
| LTEA2W | Lutron Hi-lume 2-wire (120V forward voltage only) | <Lutron> | Visit http://www.lutron.com/TechnicalDocumentLibrary/369543_ENG.pdf for a list of compatible dimmer switches. |

NOTES:

- All devices connected to one FCJ/FCJS-ECO will be controlled together. Devices will dim to the same level as the result of a control command. For more detail on adjusting low-end light level refer to Application Note#556 at www.lutron.com.
- For the Line/Hot (L/H) terminal on the driver, it is preferred not to use the switched hot (red) wire from the control but rather the hot wire directly from the power source.
- Recommended for EasySense System.



AMS, IFS105SE coverage pattern