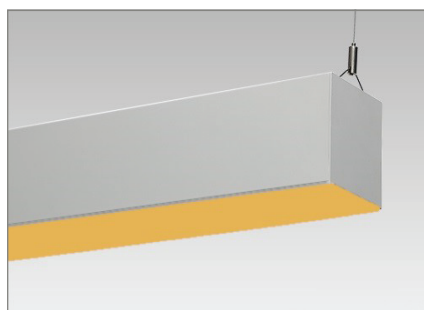


CUBE4-AMBER

| | |
|---------------|--|
| Project Name: | |
| Type: | |



APPLICATION

The specific 590nm Amber LEDs provide safe lighting for photosensitive applications such as hospitals, medical facilities and containment sensitive manufacturing facilities.

FEATURE:

- Housing is formed by cold-rolled steel with a snap-in acrylic lens.
- AB switching (2 circuits) optional for White and Amber LEDs.

MOUNTING:

- Pendant, surface and wall mount.

LED:

WHITE LED:

- Samsung LEDs.
- Color Temperature: 2700/3000/3500/4000/5000 (K).
- Color Rendering Index: > 80 (optional>90).
- Nominal Lamp Life: 100,000 hours.
- Reported L70 hours: +60,000 (55°C).

AMBER LED:

- Lumileds LEDs.
- 590nm.

FINISH:

- Standard powder-coat textured white painted finish on exposed trim, consult factory for custom colors.
- Comes with snap-in acrylic lens as standard.

ELECTRICAL:

- High power factor electronic driver, operate from a 120 ~ 277 Vac input range, 50 / 60 Hz.
- Features included over voltage protection, surge, short circuit protection and over load protection.
- Power Factor: typical > 0.95, THD <20, meets Class1 or Class 2 circuit.
- 0-10V dimmable driver as standard.
- 0-10VDC dimming 1%~100%.
- Operating temperature: -4°F (-20°C) ~ 122°F (50°C).

<ELCU-200>

- Guarantees emergency lighting remains ON or is turned on when power to the control device is lost.
- Interfaces with fire alarm panel or security system.
- "Watchdog" feature allows emergency loads to be controlled in tandem with normal power loads.
- UL listed for use in emergency circuits.

LISTING:

- UL / CUL listed.
- Listed to UL 1598 and UL 8750.
- UL listed for dry & damp location.
- CEC Compliant EM (please contact for more information)
- Assembled in USA
- 5 years limited warranty.

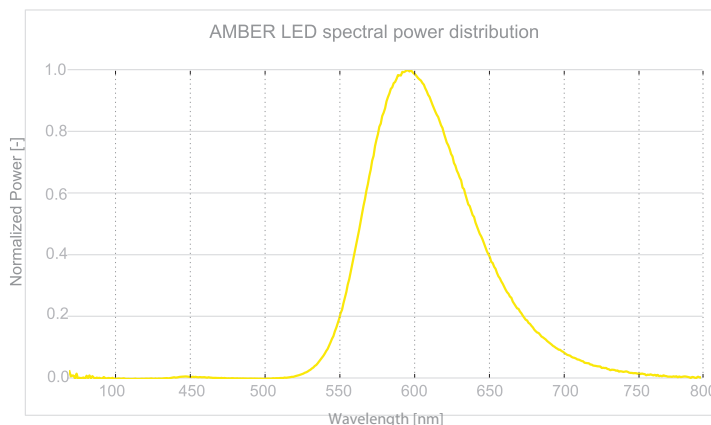
CONFIGURATIONS - WHITE LED

| Series | Size | LED | AC Input | Lumen Output | Lumen Efficiency |
|--------|------|-------|----------|--------------|------------------|
| CUBE4 | 2' | 1WHTL | 4.5W | 549.8 lm | 122.18 lm/W |
| | | 1WHTM | 9W | 1099.6 lm | 122.18 lm/W |
| | | 1WHTH | 13.5W | 1698.8 lm | 125.36 lm/W |
| | | 2WHTL | 9W | 1099.6 lm | 122.18 lm/W |
| | | 2WHTM | 18W | 2199.2 lm | 122.18 lm/W |
| | | 2WHTH | 27W | 3397.7 lm | 125.36 lm/W |
| | 4' | 1WHTL | 9W | 1099.6 lm | 122.18 lm/W |
| | | 1WHTM | 18W | 2199.2 lm | 122.18 lm/W |
| | | 1WHTH | 27W | 3397.7lm | 125.36 lm/W |
| | | 2WHTL | 18W | 2199.2 lm | 125.36 lm/W |
| | | 2WHTM | 36W | 4513 lm | 125.36 lm/W |
| | | 2WHTH | 54W | 6378 lm | 118.1 lm/W |
| | 8' | 1WHTL | 18W | 2199.2 lm | 125.36 lm/W |
| | | 1WHTM | 36W | 4513 lm | 125.36 lm/W |
| | | 1WHTH | 54W | 6378 lm | 118.1 lm/W |
| | | 2WHTL | 36W | 4513 lm | 125.36 lm/W |
| | | 2WHTM | 72W | 9026 lm | 125.36 lm/W |
| | | 2WHTH | 90W | 10478.3 lm | 116.4 lm/W |

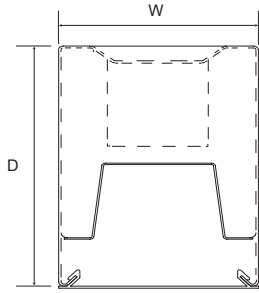
CONFIGURATIONS - AMBER LED

| Series | Size | LED | AC Input | Lumen Output | Lumen Efficacy |
|--------|------|------|----------|--------------|----------------|
| CUBE4 | 2' | 1ABR | 9W | 1151 lm | 127.8 lm/w |
| | | 2ABR | 18W | 2302 lm | |
| | | 3ABR | 27W | 3453 lm | |
| | 4' | 1ABR | 18W | 2302 lm | |
| | | 2ABR | 36W | 4604 lm | |
| | | 3ABR | 54W | 6903 lm | |
| | 8' | 1ABR | 36W | 4604 lm | |
| | | 2ABR | 72W | 9208 lm | |
| | | 3ABR | 108W | 13813 lm | |

| WHITE CCT | Multiplier | | |
|-----------|------------|----------|----------|
| | 3000K | 3500K | 5000K |
| | 0.983631 | 0.991815 | 1.016369 |



CUBE4-AMBER



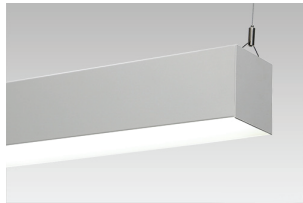
Specifications: CUBE4

Width: 4 (101)
Depth: 4 (101)

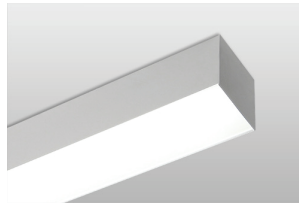
All dimensions are in inches (millimeters).

WEIGHT

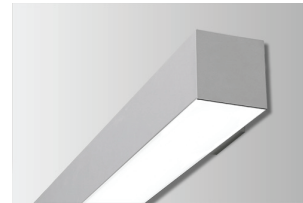
| Item | lbs | kg |
|---------------------|-------|-------|
| CUBE 4 2FT PENDANT | 8.36 | 3.79 |
| CUBE 4 3FT PENDANT | 10.95 | 4.97 |
| CUBE 4 4FT PENDANT | 13.70 | 6.22 |
| CUBE 4 8FT PENDANT | 24.97 | 11.33 |
| CUBE 4 HC90 PENDANT | 17.84 | 8.09 |
| CUBE 4 X PENDANT | 18.50 | 8.39 |
| CUBE 4 T PENDANT | 13.21 | 5.99 |



CABLE

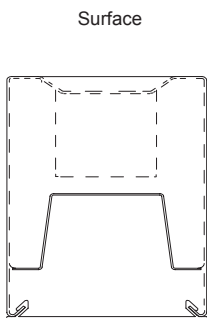


SURFACE

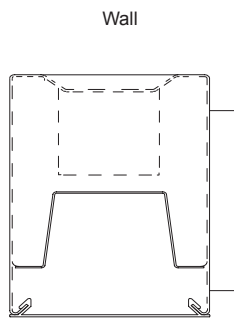


WALL

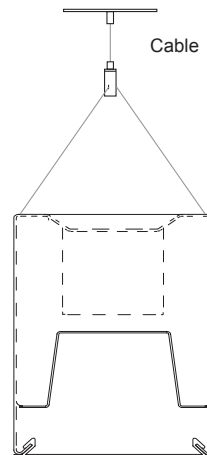
- MOUNTING DETAILS



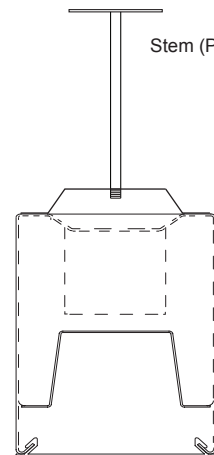
Surface



Wall



Cable



Stem (Pendant)

CUBE4-AMBER

ORDERING INFORMATION

EXAMPLE: CUBE4-IND-4-2ABR-1WHT-40K-UNV

| MODEL | ROW ¹ | SECTION ² | Amber LED | | | White LED | | | WHITE CCT | | WHITE CRI | |
|---|---|---|---|---|--|-----------------------------|---------------------------------|--|-----------|--|-----------|--|
| CUBE4-IND (Individual Mount) CUBE4-CON (Continuous Row Mount) <small>* Number of circuit(s) should be determined by the customer prior to ordering the continuous run considering the AC input voltage and total run wattage.</small> | xx' Specify nominal overall row length in 1' increments (Continuous runs) | 2 2' Length 4 4' Length 8 8' Length ³ | 1ABR 1 Row Amber LED 2ABR 2 Row Amber LED 3ABR 3 Row Amber LED | (Blank) No White LED 1WHTL 1 Row White LED, Low 1WHTM 1 Row White LED, Medium 1WHTH 1 Row White LED, High 2WHTL 2 Row White LED, Low 2WHTM 2 Row White LED, Medium 2WHTH 2 Row White LED, High | -27K 2700K ⁹ -30K 3000K -35K 3500K -40K 4000K -50K 5000K | (Blank) C9 | 80+ CRI 90+ CRI ⁸ | | | | | |
| CUBE4-CM (Custom) | Must provide a sketch on the last page | | <i>* Max 3 Arrays Total</i> | | | | | | | | | |

| MOUNTING | | VOLTAGE | | EM SECTION ^{4, 5} | | FINISH | | | CORD FINISH ¹⁰ | | CEILING TYPE (for pendant) | |
|---|------------------------------------|--|----------------------------------|--|--|---|---|------------------------------|---------------------------|--|--|--|
| (Blank) S W | Pendant Ceiling Surface Wall | UNV 120 277 347 | 120-277V 120V 277V 347V | (Blank) 1SE 2SE xSE | None EM 1 Section 2 Section X Section | (Blank) *BK *SV **CC *CSS *AMB | Matte White RAL #9003 (Std.) Black RAL #9011 Silver (RAL #9022) Custom Color ¹¹ Custom Canopy Color (White is Std.) Anti-Microbial Coating (Matte Skye White) | (Blank) BKC | White (Std.) Black | X1 X2 X3 X4 | 15/16" grid T-bar ceiling Hard ceiling Sloped Hard ceiling 9/16" T-bar ceiling | |
| <small>* Non-standard finish with extra charge. ** CC: additional charge & set up fee. Provide RAL# code.</small> | | | | | | | | | | | | |

| SUSPENSION LENGTH | | LED DRIVER | | CIRCUIT | | OPTIONS | | | | | |
|--|--|----------------|------------------------|--------------------------|---|---|---|--|--|--|--|
| AC48 AC96 ST24 ST48 | Adjustable Aircraft Cable Canopy 48"L Adjustable Aircraft Cable Canopy 96"L Stem Canopy 24"L Stem Canopy 48"L <small>* Contact factory for custom length. 1 pair (2 aircraft cables) standard for up to 8' length.</small> | (Blank) | 0-10V dim to 1% (Std.) | 1CS 2CS | One Circuit for all Two Circuits for Amber & White LED | EMG5 EMG8 EMG16 EMG25 ELCU-200 F1 F2 COC E1F E2F | 5W EM Battery Backup (CEC Compliant EM) ^{6, 12} 8W EM Battery Backup (CEC Compliant EM) ^{6, 12} 16W EM Battery Backup (CEC Compliant EM) ^{6, 12} 25W EM Battery Backup (CEC Compliant EM) ^{6, 12} Fail-to-on Emergency lighting, UL924 ⁷ Single fuse for 120v/277v/347v ¹³ Double fuse for 208v/240v ¹³ Separated EM feed for City of Chicago code compliance End feed on one end (Pre-drilled hole for 1/2" fitting) End feed on both ends (Pre-drilled holes for 1/2" fitting) | | | | |

NOTES:

- Specify only when Continuous Row Mount.
- No need to select, if same as row length and section length.
- Comes with 1pc 8ft lens.
- EM is installed in last 4' of luminaire sections. Separate section required 2SE or specified. Must specify voltage, not available with 347V.
- In combination of Amber and White configuration, EM light must be specified.
- Contact factory for other emergency ballast options.
- Shipped separately.
- Lumen per watt is around 15% less than standard CRI (80+).
- Available with C9 (CRI 90+) only.
- Cord is available in white or black (Black is not available with EM).
- Refer to color charts (RAL and/or Cardinal) in the separate attachment.
- Must specify voltage, not available with 347V.
- Must specify voltage.

ARCHITECTURAL LINEAR

CUBE 4 LIT CONNECTOR PATTERNS

The lit connector system allows continuous illumination all the way through the corner section.

Instruction:

- Please provide sketches illustrating corner types, overall dimensions including corner dimensions, and locations required.
- HC90, TC, and XC connectors are 90 degree corners (overall, outside dimension).

