

# DW-LP LED

Project Name:	
Type:	



**CASAMBI**

**APPLICATION**

LED premium grade enclosed and gasket fixture. For use in both indoor and outdoor applications where dust and moisture resistance and other non-hazardous contaminants. It is often used in refrigerated areas, food processing facilities, kitchens, parking garages, car washes, schools, government facilities, public areas and industrial spaces with low to medium mounting heights.

**FEATURES:**

- Low profile designed weatherproof enclosure, one-piece 5VA fiberglass housing, NEMA 4X gasket.
- Impact Resistant Acrylic and Polycarbonate lenses available.
- The diffuser and upper components are locked into place by retaining latches, assuring a secure and tight seal.
- Captive non-metallic snap-action latch cam secures lens to housing. Optional stainless steel latch.
- White end plugs 1/2" Housing end holes (2) - Snaps and locks tight to maintain tight seal of unused end holes.
- Smooth edges for easy handling.
- Tamper resistant (TR) option prevents the lens from being removed by unauthorized personnel. Tamper proof driver cat. TRDT required (sold separately).

**MOUNTING:**

- Surface mount bracket provided as a standard (Stainless steel).
- Chain/cable, stem (single or double), 45 degree mount optional.

**LED:**

- Color Temperature: 2700/3000/3500/4000/5000 (K).
- LED Module: High efficiency up to 162 LPW.
- Calculated L70: 122,000 hours
- Reported L70: +60,000 hours
- Poke in wire connectors.
- Color Rendering Index: 80+ (optional>90).

**ELECTRICAL:**

- High power factor electronic driver, operate from a 120~277 Vac input range, 50 / 60 Hz.
- Generic: 0-10V Dim to 10%(GR).
- Power Factor: +0.9
- Efficiency: +85%
- Ambient Operating Temperature: -22°F (-30°C) ~ 122°F (50°C) (Std.) -40°F (-40°C) ~ 122°F (50°C) (with LT option) -31°F (-35°C) ~ 140°F (60°C) (with HT option)
- Constant Current, Class 2
- <ELCU-200>
- Guarantees emergency lighting remains ON or is turned on when power to the control device is lost.
- Interfaces with fire alarm panel or security system.
- "Watchdog" feature allows emergency loads to be controlled in tandem with normal power loads.
- UL listed for use in emergency circuits.

**LISTING:**

- ROHS.
- UL/CUL listed and labeled.
- Listed to UL 1598 and UL 8750.
- DLC listed. <sup>8</sup>
- Suitable for damp / wet location listed.
- IP Rating: IP65, IP66, and IP67.
- CEC Compliant EM (please contact for more information)
- Made in USA.
- ARRA and BAA compliant.
- 5 years limited warranty.
- NSF International certified.
- NSF Splash Zone 1 & 2 rated.
- U.S. Department of Agriculture.
- Canadian Standard Association.
- Nema 4X rated lens and housing.
- 1500 PSI hose-down.
- Bluetooth Mesh System available, please contact factory for more information.

**DIFFUSER**

	2FT	4FT	8FT	
DIRA	O	O	O	Impact resistant acrylic, Linear Ribbed Clear Lens
DIRAFR	O	O	O	Impact resistant acrylic, Linear Ribbed Frosted Lens
PCC	O	O	O	Polycarbonate, smooth clear lens
PCF	O	O	O	Polycarbonate, smooth frosted lens
IAC	O	O	O	Impact resistant acrylic, smooth clear lens
IAF	O	O	O	Impact resistant acrylic, smooth frosted lens
IACD	O	O	O	Deep impact resistant acrylic clear lens
IAFD	O	O	O	Deep impact resistant acrylic frosted lens

# DW-LP LED

## CONFIGURATIONS (DIRA Lens)

	Model #	AC Input	Lumen Output	Lumen Efficiency
2FT	18LED	18W	2548 lm	141.5 lm/W
	20LED	20W	2831 lm	
	27LED	27W	3823 lm	
	36LED	36W	5097 lm	
4FT	18LED	18W	2548 lm	
	27LED	27W	3823 lm	
	36LED	36W	5097 lm	
	45LED	45W	6372 lm	
	56LED	56W	7930 lm	
	72LED	72W	10196 lm	
8FT	100LED	100W	14150 lm	
	36LED	36W	5097 lm	
	54LED	54W	7646 lm	
	72LED	72W	10196 lm	
	88LED	88W	12462 lm	
	112LED	112W	15861 lm	
	144LED	144W	20376 lm	
	170LED	170W	24055 lm	

: Based on 5000K.

## CONFIGURATIONS (DIRAFR Lens)

	Model #	AC Input	Lumen Output	Lumen Efficiency
2FT	18LED	18W	2409 lm	133.8 lm/W
	20LED	20W	2677 lm	
	27LED	27W	3613 lm	
	36LED	36W	4819 lm	
4FT	18LED	18W	2409 lm	
	27LED	22W	3613 lm	
	36LED	36W	4819 lm	
	45LED	45W	6023 lm	
	56LED	56W	7496 lm	
	72LED	72W	9638 lm	
8FT	100LED	100W	13380 lm	
	36LED	36W	4819 lm	
	54LED	54W	7228 lm	
	72LED	72W	9638 lm	
	88LED	88W	11780 lm	
	112LED	112W	14993 lm	
	144LED	144W	19267 lm	
	170LED	170W	22746 lm	

: Based on 3500K.

## CONFIGURATIONS (W Distribution)

	Model #	AC Input	Lumen Output	Lumen Efficiency
2FT	18LED	18W	2288 lm	127 lm/W
	20LED	20W	2543 lm	
	27LED	27W	3433 lm	
	36LED	36W	4577 lm	
4FT	18LED	18W	2288 lm	
	27LED	22W	3433 lm	
	36LED	36W	4577 lm	
	45LED	45W	5721 lm	
	56LED	56W	7121 lm	
	72LED	72W	9156 lm	
8FT	100LED	100W	12700 lm	
	36LED	36W	4577 lm	
	54LED	54W	6865 lm	
	72LED	72W	9156 lm	
	88LED	88W	11191 lm	
	112LED	112W	14240 lm	
	144LED	144W	18288 lm	
	170LED	170W	21590 lm	

: Based on 4000K.

## CONFIGURATIONS (PG Distribution)


	Model #	AC Input	Lumen Output	Lumen Efficiency
2FT	18LED	18W	2141 lm	118.9 lm/W
	20LED	20W	2379 lm	
	27LED	27W	3212 lm	
	36LED	36W	4282 lm	
4FT	18LED	18W	2141 lm	
	27LED	22W	3212 lm	
	36LED	36W	4282 lm	
	45LED	45W	5721 lm	
	56LED	56W	7121 lm	
	72LED	72W	8565 lm	
8FT	100LED	100W	11890 lm	
	36LED	36W	4282 lm	
	54LED	54W	6421 lm	
	72LED	72W	8565 lm	
	88LED	88W	10470 lm	
	112LED	112W	13325 lm	
	144LED	144W	17121 lm	
	170LED	170W	20213 lm	


: Based on 4000K.

# DW-LP LED

ORDERING INFORMATION

EXAMPLE: DW-LP-4-45LED-50K-HE-UNV-DIRA

MODEL	LENGTH	LED	COLOR TEMP.	EFFICACY	CRI	VOLTAGE
DW-LP	2 2' Length	<b>18LED</b> 18W LED <b>20LED</b> 20W LED <b>27LED</b> 27W LED <b>36LED</b> 36W LED xx Custom lumen or watt: ___LM or ___W <small>* 2FT: max up to 4820lm or 36W.</small>	<b>-27K</b> 2700K <b>-30K</b> 3000K <b>-35K</b> 3500K <b>-40K</b> 4000K <b>-50K</b> 5000K	<b>HE</b> High Efficacy (Std.) 	<b>(Blank) C9</b> 80+ CRI 90+ CRI <sup>5</sup>	<b>UNV</b> 120-277V <b>120</b> 120V <b>277</b> 277V <b>347</b> 347V
	4 4' Length	<b>18LED</b> 18W LED <b>27LED</b> 27W LED <b>36LED</b> 36W LED <b>45LED</b> 45W LED <b>56LED</b> 56W LED <b>72LED</b> 72W LED <b>100LED</b> 100W LED xx Custom lumen or watt: ___LM or ___W <small>* 4FT: max up to 13380lm or 100W.</small>				
	8 8' Length	<b>36LED</b> 36W LED <b>54LED</b> 54W LED <b>72LED</b> 72W LED <b>88LED</b> 88W LED <b>112LED</b> 112W LED <b>144LED</b> 144W LED <b>170LED</b> 170W LED xx Custom lumen or watt: ___LM or ___W <small>* 4FT: max up to 22746lm or 170W.</small>				

DIFFUSER <sup>9</sup>		LED DRIVER <sup>4</sup>		DISTRIBUTION	
<b>DIRA</b> Impact resistant acrylic, Linear Ribbed Clear Lens (Std.) <b>DIRA FR</b> Impact resistant acrylic, Linear Ribbed Frosted Lens <b>PCC</b> Polycarbonate smooth clear lens <b>PCF</b> Polycarbonate smooth frosted lens <b>IAC</b> Impact resistant acrylic, smooth clear lens <b>IAF</b> Impact resistant acrylic, smooth frosted lens <b>IACD</b> Deep impact resistant acrylic clear lens <b>IAFD</b> Deep impact resistant acrylic frosted lens	<b>GR</b> Generic, 0-10V 10% dim (Std.) <b>DM1</b> Generic 0-10V 1% dim <b>SD40</b> 40% / 100% Bi-Level Step dim <b>SDXX</b> XX% / 100% Bi-Level Step dim (Specify XX : 10% ~ 70%) <b>TD30/70</b> 30% / 70% / 100% Tri-Level Step dim <b>TDXX/YY</b> XX% / YY% / 100% Tri-Level Step dim (Specify XX, YY : 10% ~ 70%) eldoLED SOLOdrive Natural Dimming to dark, 0-10V, 100% ~ 0.1% dim Hi-lume 1% EcoSystem LED driver with Soft-on, Fade-to-Black dimming technology, 100% ~ 1% dim   <b>BLT</b> Bluetooth Mesh System (contact factory for more information)	<b>(Blank)</b> Normal <b>W</b> Wide <b>PG</b> Parking Garage  <small>* W and PG distribution: only available with IACD or IAFD lens option.</small>			

MOUNTING		OPTIONS			
<b>(Blank)</b> Surface Mount (Stainless steel) <b>45D</b> 45 Degree Mount (Stainless steel) <sup>11</sup> <b>SP</b> 1/2" IP single stem mounting bracket for 2ft fixture only (stem purchased separately) <sup>13</sup>  <b>DP</b> 3/8" double threaded rod mounting bracket (threaded rod by others) <b>DP2</b> 1/2" IP double stem mounting bracket (stem purchased separately) Chain or Cable <b>CCP</b> Topaz 34S Swivel stem hanger (order with SH-1/2-xx) <b>34S</b> 1/2" IPS Stem with canopy kits for SP option (xx=stem length, 18, 24, 36, 48 inches)  <b>SH-1/2-xx</b>	<b>EMG8</b> 1296 LUMEN EM Battery Backup (CEC Compliant EM) <sup>2,3</sup> <b>EMG15</b> 2430 LUMEN EM Battery Backup (CEC Compliant EM) <sup>2,3</sup> <b>EMG20</b> 3240 LUMEN EM Battery Backup (CEC Compliant EM) <sup>2,3</sup> <b>EMG25</b> 4050 LUMEN EM Battery Backup (CEC Compliant EM) <sup>2,3</sup> <b>CWEM6</b> 6W EM Cold Weather -4°F (-20°C) ~ 131°F (55°C) <b>ELCU-200</b> Fail-to-on Emergency lighting, UL924 <sup>6</sup> <b>GTD</b> Bodine Generator Transfer Device <b>GTD10DIM</b> Bodine Generator Transfer Device (0-10VDC Dimmer Override)  <b>F1</b> Single fuse for 120/277/347V <sup>1</sup> <b>F2</b> Double fuse for 208/240/480V <sup>1</sup> <b>SSL</b> 316 Stainless Steel Latch <b>TRCP</b> Tamper-proof plastic latch <b>TRDT</b> Tamper-proof Driver Tool <b>DC011</b> One end 1/2" Hub. Water Tight Die Cast Fitting <b>DC012</b> Both ends 1/2" Hub. Water Tight Die Cast Fitting <b>DC021</b> One end 3/4" Hub. Water Tight Die Cast Fitting <b>DC022</b> Both ends 3/4" Hub. Water Tight Die Cast Fitting	<b>WMS</b> Wet Location Occupancy Sensor <b>WDMS</b> Wet Location Day Light Motion Sensor, Fail on <b>EFS01RE</b> Fixture External mount 0-10V Bi-Level Dimming Occupancy PIR Sensor. Daylight Harvesting. (adjustable by Remote Control only-RM51)  <b>RM5</b> Handheld Remote for EFS01RE <b>HC403</b> Microwave bi-level Occupancy Sensor, adjustable via DIP switch <sup>7</sup> <b>HRC-05</b> Handheld Remote for HC403 <b>BRI819P-B-O-L2</b> Fixture External mount On/Off occupancy and daylight sensor, max 40ft height, adjustable via DIP switch  <b>LT</b> Low Temperature for freezer (-40°F (-40°C) ~ 122°F (50°C)) <b>HT</b> High Temperature (-31°F (-35°C) ~ 140°F (60°C)) <b>AMB</b> Anti-Microbial Coating (Matte Skye White)			

# DW-LP LED

LIGHTING CONTROL SYSTEM	
<b>AUTANI</b>	<Bluetooth> Autani / Keilton Bluetooth control ready options.
<b>CASAMBI</b>	Casambi Bluetooth control ready options.
<b>AVI-ON</b>	Avi-On Bluetooth control ready options.
* Please contact factory for Bluetooth control with sensor and other options	

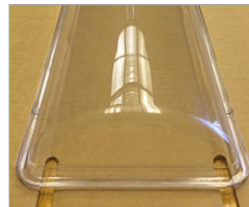
- NOTES:
1. Must specify voltage.
  2. Contact factory for other emergency ballast options.
  3. Not available with 347V.
  4. To find an approved dimmer switch, please see table 1.
  5. Lumen per watt is approximately 15% fewer than standard CRI (80+).
  6. Shipped separately.
  7. Integrated Microwave bi-level Occupancy Sensor, adjustable via DIP switch (mounted inside fixture).
  8. DesignLights Consortium® (DLC) qualified product. Not all versions of this product may be DLC qualified. Please check the DLC Qualified Products List at [www.designlights.org/QPL](http://www.designlights.org/QPL) to confirm which versions are qualified.
  9. Refer to diffuser chart for compatibility.



**DIRA**  
Linear Ribbed Clear Lens



**DIRAFR**  
Linear Ribbed Frosted Lens



**PCC, IAC**  
Smooth Clear Lens



**PCF, IAF**  
Smooth Frosted Lens

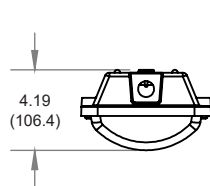


**IACD**  
Deep Impact Resistant Clear Lens



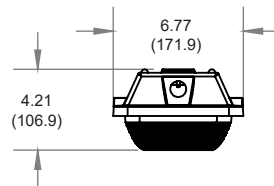
**IAFD**  
Deep Impact Resistant Frosted Lens

**PCC, PCF, IAC, IAF Lens**



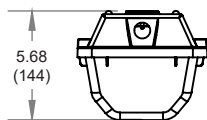
DW-LP

**DIRA, DIRAFR Lens**

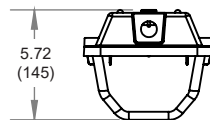


DW-LP

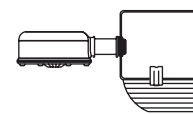
**IACD, IACF Lens**



DW-LP-2

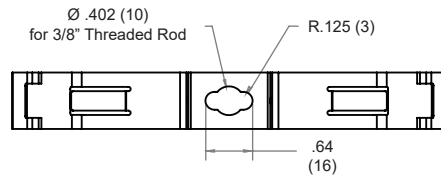


DW-LP-4/8



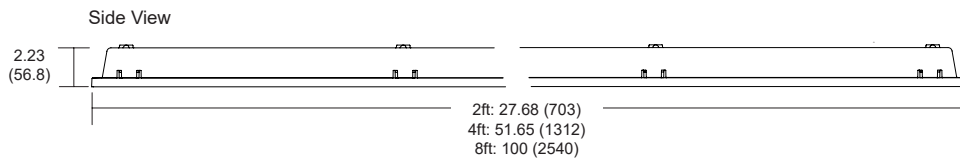
**WMS, WDMS, EFS01RE**

# DW-LP LED

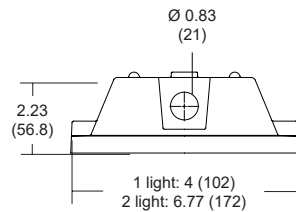


Bracket for DP option

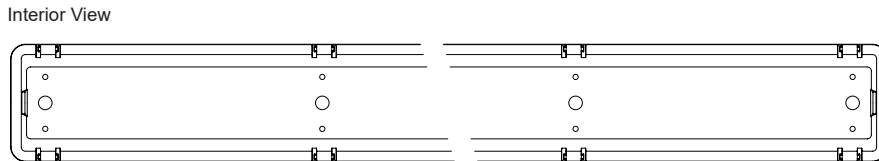
**DIMENSION:**



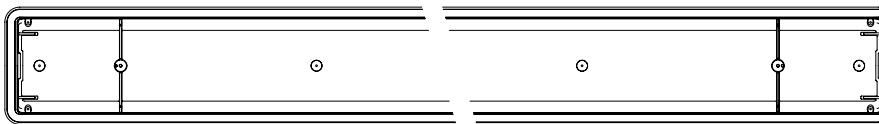
Side View



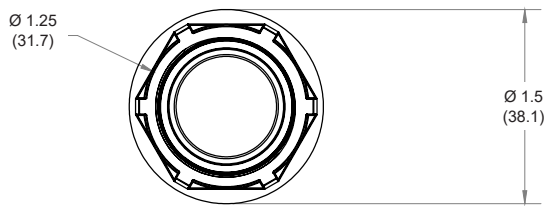
All dimensions are in inches (millimeters).



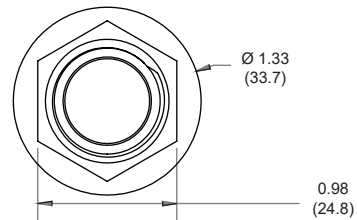
Interior View



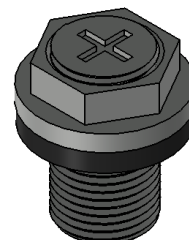
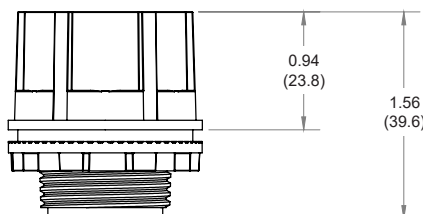
Top View

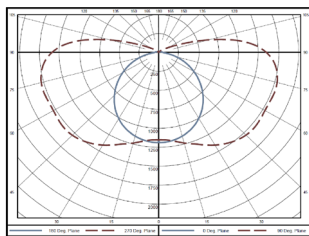


DC01

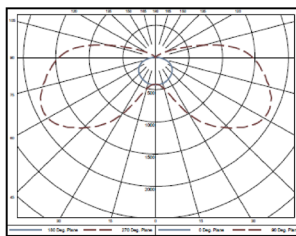


DC02





W Distribution : wide

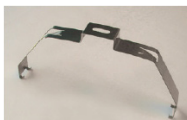


PG Distribution : parking garage

## MOUNTING INFORMATION:



Surface Mount (Std.)



Chain/Cable Pendant Mount



Single/Double Pendant Mount



45 Degree Mount



## APPROVED DIMMER SWITCH (TABLE 1)

	Manufacturer	Manufacturer Part #
GR	LUTRON	NTSTV-DV
	LEVITON	IP710-DLZ
PH	LUTRON	Nova: NFTV- dimmer plus PP-DV relay pack(s) Nova T: NTSTV-DV-dimmer Diva: DVTV-dimmer, DVSCSTV-dimmer, plus PP-DV relay pack(s), DVSTV-dimmer, DVSCSTV-dimmer GRAFIK Eye QS: QSGRJ-XP, plus GRX-TVI 0-10V interface GRAFIK Eye QS with EcoSystem: QSGRJ-XE, QSGR-XE, plus GRX-TVI 0-10V interface PowPak: RMJ-5T
	LEVITON	Leviton: IP710-LFZ
	PHILIPS	Sunrise - SR1200ZTUNV
OS, OS1	OSRAM	ZBHA-CLM DIM (NAED:45678)
	ENCELIUM EMS	EN-LCM-1R10V-GB2-BK, EN-LCM-1R10V-GB2-BK/DR, EN-ALC-1R10V-GB2-BK, EN-ALC-1R10V-GB2-BK-DR
	LEVITON	IP710-DLX
	LUTRON	DVTV-XX
	WATTSTOPPER	ADF-120277
	SYNERGY LIGHTING CONTROLS	ISD BC
	WATTSTOPPER	FD-301
	WATTSTOPPER	FSP-202
ENLIGHTED INC.	SU-3E-00 (Enlighted Compact Sensor)	

\* If you want other specific kind, please contact us.

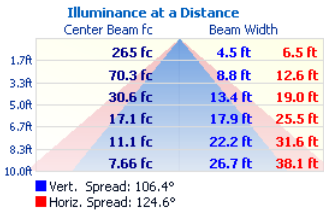
## HC403 FACTORY SETTING (TABLE 2)

Detection Area	100%
Hold-time	5 sec
Daylight sensor	Disable
Stand-by period (tri-level control)	10 sec
Stand-by dimming level	10%

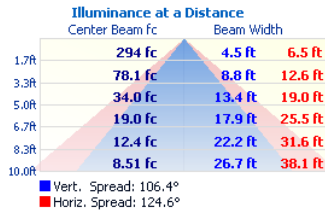
\* See a separate attachment to find more setting options.

# DW-LP LED

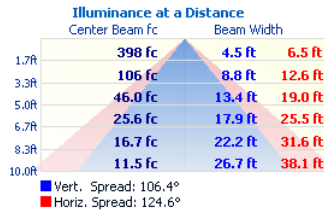
DW-LP-2-18LED



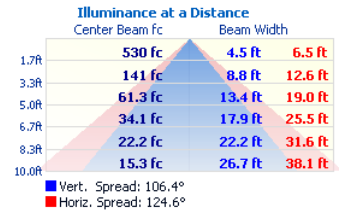
DW-LP-2-20LED



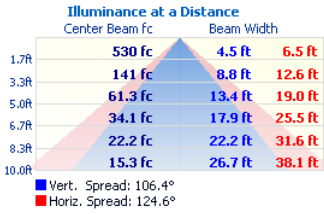
DW-LP-2-27LED



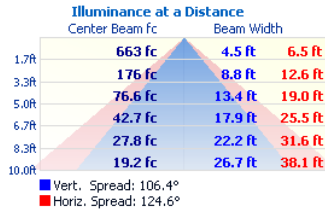
DW-LP-2-36LED



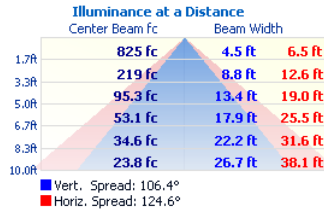
DW-LP-4-36LED



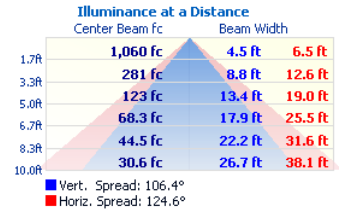
DW-LP-4-45LED



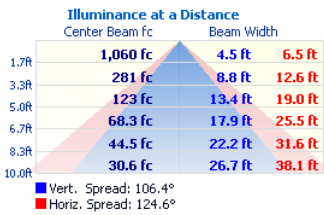
DW-LP-4-56LED



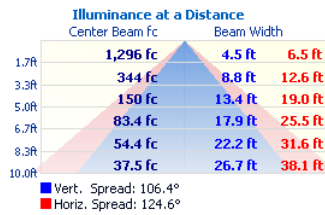
DW-LP-4-72LED



DW-LP-8-72LED



DW-LP-8-88LED



DW-LP-8-112LED

