

# LAD+RGBW/A

Project Name:	
Type:	



### APPLICATION

These color capable luminaires bring flexibility and open doors to various types of applications. The RGBW technology is a combination of those three primary colors in addition to white. Additional white LEDs illuminates a much purer white tone and brings flexibility for color mixing through the RGB chips. Playing with different colors of the LEDs can form infinite color hue possibilities to not only just illuminate space, but manipulate for your desired hue and shades. DMX/RDM control can provide an ultimate solution to optimize the needs from residential to commercial, healthcare, education, retails, entertainment, office, and more.

### A type frame (architectural frame-in):

- 4/6/8" horizontal architectural frame-in design.
- Heavy gauge die formed galvanized steel mounting frame trim clips to mount open conical shape reflector.
- Vertically adjustable mounting brackets that use conduit or C channel (please see drawing for recommended C channel size on the next page).
- Provides 3-3/4" total adjustment.
- C channel is optional, not included as std.
- Post installation adjustment possible from above or below the ceiling.
- Maximum 1-1/2" ceiling thickness.
- Reflectors are optically designed to maximize lumen output and to provide superior glare control.
- Non-insulated ceilings or where insulation can be kept 3" from all side of housing.

### C type frame (commercial frame-in):

- 4/6/8" horizontal commercial frame-in design.
- Galvanized steel plaster frame: Quality galvanized steel ring riveted to elevated steel junction box tray.
- Housing can be removed from plaster frame for junction box access.
- 16-gauge galvanized steel construction.
- Maximum 1-1.2" ceiling thickness.
- Tool-less adjustments post installation.
- Non-insulated ceilings or where insulation can be kept from all side of the housing.
- Mounting: Bar hanger allows fixtures to affix to Tbar grid into wood or steel joist members.
- Reflectors are optically designed to maximize lumen output and to provide superior glare control.

### BAR HANGERS:

- Pre-installed adjustable bar hangers for span 24".
- No clips required. Secure bar hangers to T-bars with wires or screws.
- Integral captive nails included for fast and easy installation.

### FEATURES:

- Remote driver standard, remote box provided.

### JUNCTION BOX:

- Galvanized steel junction box with seven 1/2" knockouts, four pryouts, and snap on cover.
- Electrical connections are made through a single junction box door.
- Access to junction box from below ceiling after removal of reflector for easy maintenance.

### LED:

- Nichia LED technology.
- 3 step MacAdam for white.
- CRI80 standard for white.

### LISTING:

- UL/CUL listed for damp locations with covered ceiling.
- UL/CUL wet location listed with "W" lens only.
- Listed to UL 1598 and UL 8750.
- Minimum 75°C supply conductors.
- CSA certified to US.
- 5 years limited warranty.
- ARRA compliant.

### CONFIGURATIONS

	MODEL	COLOR	Max AC Input	Lumen Output	CCT / Dominant Wavelength Range	
					Maximum	Minimum
RGBW RGBA	20L	RED	10W	279 lm	615nm	630nm
		GREEN	10W	1872 lm	550nm	560nm
		BLUE	10W	378 lm	450nm	455nm
		3000K	20W	1287 lm	2800K	3200K
		4000K	20W	1377 lm	3800K	4200K
		5000K	20W	1422 lm	4800K	5200K
		AMBER	20W	1116 lm	585nm	595nm
	50L	RED	12.6W	352 lm	615nm	630nm
		GREEN	12.6W	2359 lm	550nm	560nm
		BLUE	12.6W	476 lm	450nm	455nm
		3000K	25.2W	1622 lm	2800K	3200K
		4000K	25.2W	1735 lm	3800K	4200K
		5000K	25.2W	1792 lm	4800K	5200K
		AMBER	25.2W	1406 lm	585nm	595nm

# LAD+RGBW/A

**ORDERING INFORMATION**

*EXAMPLE: LAD4A-20L-RGBW40K-UNV*

MODEL				LED		RGBW/A		VOLTAGE		LED DRIVER	
<b>LAD4</b>	4" size	<b>A</b>	Architectural Frame	<b>20L</b>	20W LED	<b>-RGBW30K</b>	RGBW with 3000K white	<b>UNV</b>	120-277V	<b>RDMX</b>	DMX512 /RDM standard protocol, 1-100% dim (std.) <sup>2</sup> Moon's deep dimming DMX/ RDM full color dimming, 0.1-100%. <sup>3</sup>
<b>LAD6</b>	6" size	<b>C</b>	Commercial Frame	<b>50L</b>	50W LED	<b>-RGBW40K</b>	RGBW with 4000K white				
<b>LAD8</b>	8" size					<b>-RGBW50K</b>	RGBW with 5000K white				
						<b>-RGA</b>	RGB with Amber				

CONTROLS		REFLECTOR		TRIM RING		LENS	
<b>(Blank)</b>	No options or controls from below 4-zone DMX512 wall mount touch panel, 100-240VAC input only 4-zone DMX512 wall mount touch panel, 100-240VAC input only 5vdc adapter provided	<b>WW</b>	White Reflector w/ White Plastic Ring	<b>(Blank)</b>	White Trim Ring Black Trim Ring	<b>W</b>	White Smooth Splay w/ Frosted Lens (Wet Location)
<b>DMXT14</b>		<b>CW</b>	Clear Reflector w/ White Plastic Ring				
<b>DMXT8</b>		<b>PLW</b>	Platinum Haze Reflector w/ White Plastic Ring				

OPTIC	
<b>CHB24</b>	C-Channel Bar
<b>FRAME</b>	Rough-in frame pre-ship request <sup>1</sup>

**NOTES:**

1. LED driver will be included.
2. Field selectable DMX address via a decoder provided.
3. DMX address must be provided when placing an order.

**ELECTRICAL INFORMATION**

DRIVER MODEL#	RDMX	MRDMX
INPUT VOLTAGE	120-277V, 50-60Hz	120-277V, 50-60Hz
DIMMING	100% - 1%	100% - 0.1%
PF	-	< 0.9
THD	-	< 20%
EFFICIENCY	-	87% typical
CONTROL	DMX/RDM, 4 channels	DMX/RDM, 4 channels
PWM frequency	2000/500Hz selectable	7.2KHz
OPERATING TEMP.	-22°F to 131°F (-30°C to 55°C)	-40°F to 122°F (-40°C to 50°C)
SAFETY & EMC	EN5 5032 2015, EN61000-3-2:2014, EN61000-3-2:2013, EN55024:2010/A1-2015, EN 61347-1:2015, EN 61347-2-11: 2015	UL8750, UL1310 CLASS 2, CAN/CSA-C22.2 n0.223-M91, EN61347-1, EN61347-2-13, FCC Part 15 Class B, EN55015, EN61000-3-2, EN61000-3-3

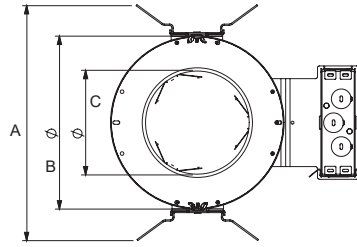
# LAD+RGBW/A

**DIMENSIONS**

All dimensions are in inches.  
Drawings are for dimensional detail information only.

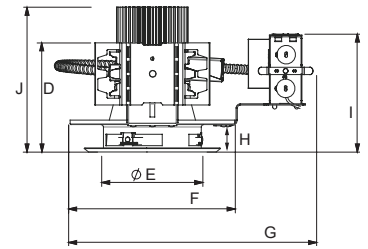


**"A" TYPE**

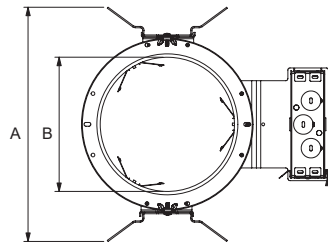


**4" size**

- Dimensions**  
 A: 10-13/16" (275)  
 B: 8" (203)  
 C: 4-27/32" Dia. (123)

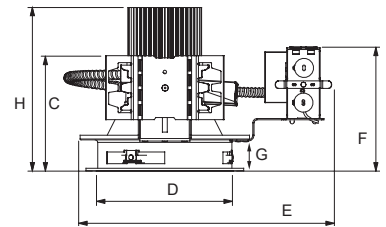


- Dimensions**  
 D: 5-1/4" (133)  
 E: 4-27/32" Dia. (123)  
 F: 7-15/16" (202)  
 G: 11-13/16" (300)  
 H: 1-1/2" (38)  
 I: 5-21/32" (144)  
 J: 7" (178.3)

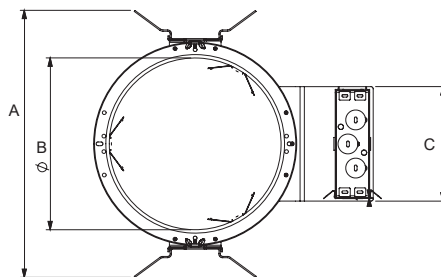


**6" size**

- Dimensions**  
 A: 10-7/8" (276)  
 B: 6-1/4" Dia. (158)

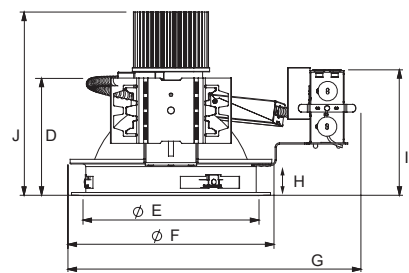


- Dimensions (16W, 25W, 38W, 50W)**  
 C: 5-3/8" (136)  
 D: 6-5/16" Dia. (160)  
 E: 11-7/8" (302)  
 F: 5-3/4" (146)  
 G: 1-1/2" (38)  
 H: 7-11/16" (195.6)



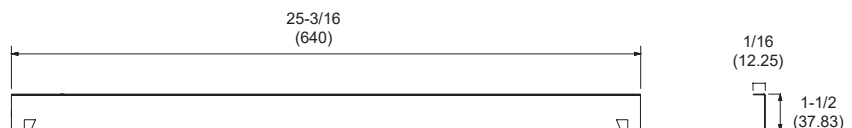
**8" size**

- Dimensions**  
 A: 12-7/32" (310)  
 B: 7-7/8" Dia. (200)  
 C: 5-1/4" (133)



- Dimensions (16W, 25W, 38W, 50W)**  
 D: 5-11/32" (136)  
 E: 7-15/16" Dia. (202)  
 F: 9-5/16" (236)  
 G: 13-7/32" (336)  
 H: 1-1/2" (38)  
 I: 5-3/4" (146)  
 J: 8-7/16" (214.9)

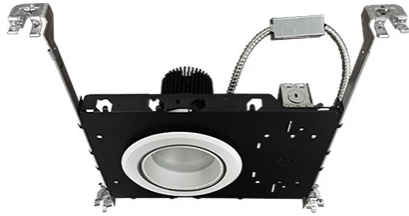
**Recommended C Channel Bar**  
part# CHB24 (optional)



# LAD+RGBW/A

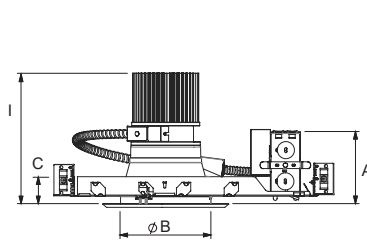
**DIMENSIONS**

All dimensions are in inches.  
Drawings are for dimensional detail information only.



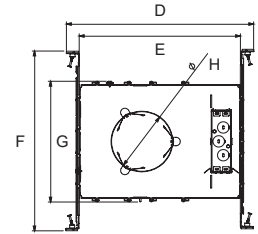
**"C" TYPE**

**4" size**



**Dimensions**

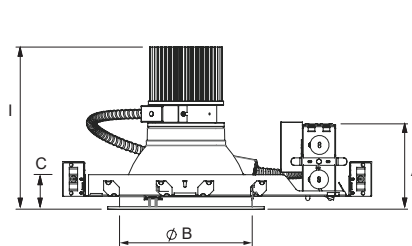
- A: 3-15/16" (100.3)
- B: 4-13/16" Dia. (122)
- C: 1-1/2" (38)
- I: 7" (178.3)



**Dimensions**

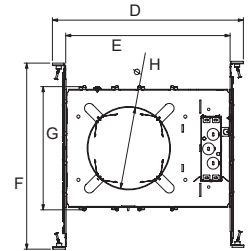
- D: 15-5/16" (389.2)
- E: 12-9/16" (319)
- F: 16-1/8" (410)
- G: 9-9/16" (243)
- H: 4-23/32" Dia. (120)

**6" size**



**Dimensions**

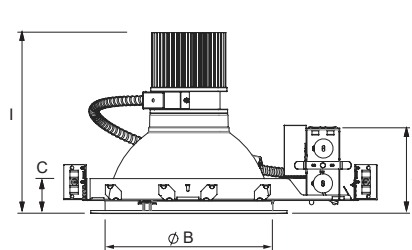
- A: 3-15/16" (100.6)
- B: 6-5/16" Dia. (160.6)
- C: 1-1/2" (38)
- I: 7-11/16" (195.6)



**Dimensions**

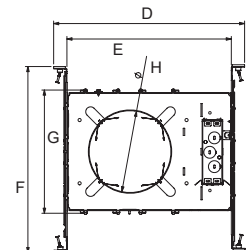
- D: 15-5/16" (389.2)
- E: 12-19/32" (320)
- F: 16-1/8" (410)
- G: 9-7/16" (240)
- H: 6-1/4" Dia. (159)

**8" size**



**Dimensions**

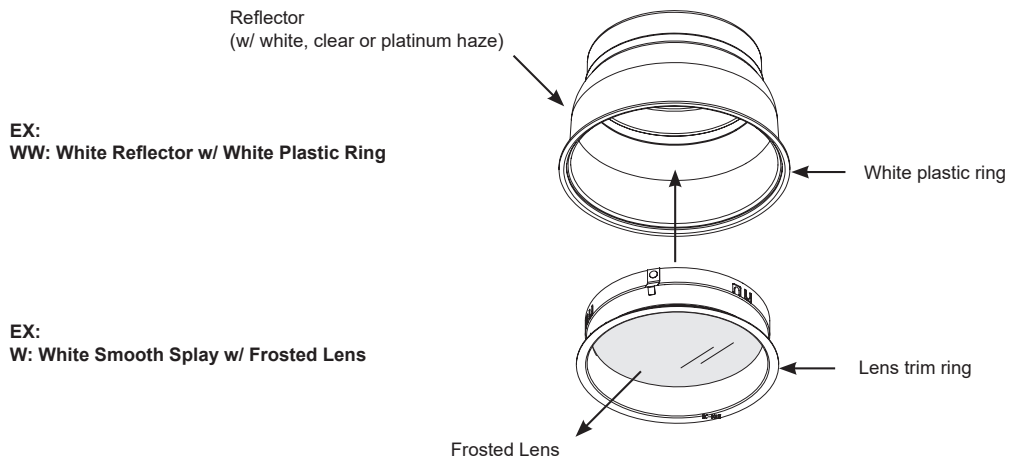
- A: 3-15/16" (100.6)
- B: 6-5/16" Dia. (160.6)
- C: 1-1/2" (38)
- I: 8-1/2" (214.9)



**Dimensions**

- D: 15-5/16" (389.2)
- E: 12-19/32" (320)
- F: 16-1/8" (410)
- G: 9-7/16" (240)
- H: 6-1/4" Dia. (159)

# LAD+RGBW/A



**DMXT14**

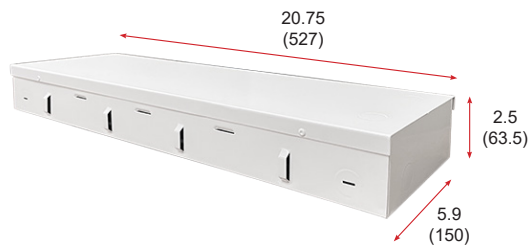
Zone	4 zone
Signal	DMX512 protocol
Dimensions	L 3.4" x H 3.4" x D 1.45"
Features	10 built-in mode, scene
Operating Temp.	-22°F ~ 131°F (-30°C ~ 55°C)



**DMXT8**

Zone	4 zone
Signal	DMX512 protocol
Dimensions	L 7" x H 1.3" x D 1.9"
Features	12 built-in mode, scene
Operating Temp.	-22°F ~ 131°F (-30°C ~ 55°C)

**REMOTE BOX DETAILS**



All dimensions are in inches (millimeters).