

DW-2G LED

Project Name:	
Type:	



CASAMBI

APPLICATION

LED premium grade enclosed and gasket fixture. For use in indoor application where dust and moisture resistance and other non-hazardous contaminants. Also in dirty or wet environments including food processing, cold storage, kitchens, parking garages, car washes, covered canopies, pedestrian tunnels, concourses, and industrial.

FEATURES:

- Compression molded self-extinguishing fiberglass reinforced polyester compound with UL 5V flame rating (ASTM D635-74).
- Rigid one piece housing construction.
- The housing is sealed against dust and moisture.
- EN-seal™ gasketing provides superior resistance to moisture absorption versus conventional gasketing.
- Molded latch pockets compatible with standard and tamper-proof latches in white acetal, and stainless steel.
- Standard housing available with one 7/8" conduit entry point on either or both ends.

MOUNTING:

- Standard 316 stainless steel brackets for surface mount provided as a standard.
- Optional flush mount brackets, serves as a mounting point for either a snap-in-place mount or a hook.
- Two 1/4-28 brass studs molded into back of housing for attachment of optional mounting brackets.

LENS:

- Inline thermoformed low profile lenses available in 50% DR acrylic in clear, crepe and Lumieo.
- Lenses for parking garage applications available in 50% DR clear acrylic, polycarbonate and Lumieo.
- Lens retained by 6 for 2ft and 8 for 4ft captive flush mounted latches.

LED:

- Color Temperature: 2700/3000/3500/4000/5000 (K).
- LED Module: High efficiency up to 162 LPW.
- Calculated L70: 122,000 hours
- Reported L70: +60,000 hours
- Poke in wire connectors.
- Color Rendering Index: 80+

ELECTRICAL:

- High power factor electronic driver, operate from a 120~277 Vac input range, 50 / 60 Hz.
- Universal Lighting Everline : 0-10V Dim to 1%(ULT)
- Generic: 0-10V Dim to 10%(GR).
- Power Factor: +0.9
- Efficiency: +85%
- Ambient Operating Temperature:
 - 22°F (-30°C) ~ 122°F (50°C) (Std.)
 - 40°F (-40°C) ~ 122°F (50°C) (with LT option)
 - 31°F (-35°C) ~ 140°F (60°C) (with HT option)
- Constant Current, Class 2
- <ELCU-200>
- Guarantees emergency lighting remains ON or is turned on when power to the control device is lost.
- Interfaces with fire alarm panel or security system.
- "Watchdog" feature allows emergency loads to be controlled in tandem with normal power loads.
- UL listed for use in emergency circuits.

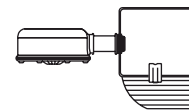
LISTING:

- F1 weatherability rating.
- UL 5V flame rating (ASTM D635-74).
- UL/cUL listed for damp and wet location.
- IP65, IP66 and IP67.
- IP69K Rated using polycarbonate and acrylic parking garage lenses (#SNGP50, SNGPGPC, SNGPGPC-F/S).
- NSF International certified for NSF/ANSI Standard 2 - Food Equipment.
- Bluetooth Mesh System available, please contact factory for more information.
- ARRA and BAA compliant.

CONFIGURATIONS

	Model #	AC Input	Lumen Output	Lumen Efficiency
2FT	18LED	18W	2548 lm	141.5 lm/W
	20LED	20W	2831 lm	
	27LED	27W	3823 lm	
	36LED	36W	5097 lm	
4FT	36LED	36W	5097 lm	
	45LED	45W	6372 lm	
	56LED	56W	7930 lm	
	72LED	72W	10196 lm	

: Based on 5000K.



WMS, WDMS, LOD-500S-x

HC403 FACTORY SETTING (TABLE 2)


Detection Area	100%
Hold-time	5 sec
Daylight sensor	Disable
Stand-by period (tri-level control)	10 sec
Stand-by dimming level	10%

* See a separate attachment to find more setting options.


LED GASKET ENCLOSURE VAPORTITE

ORDERING INFORMATION

EXAMPLE: DW-2G-4-45LED-50K-HE-UNV-SNGPG50

MODEL	LENGTH	LED	COLOR TEMP.	CRI	EFFICACY	VOLTAGE
DW-2G	2 2' Length	18LED 18W LED 20LED 20W LED 27LED 27W LED 36LED 36W LED xx Custom lumen or watt: ___LM or ___W <small>* Max up to 5097lm or 36W per 2ft.</small>	-27K 2700K -30K 3000K -35K 3500K -40K 4000K -50K 5000K	(Blank) 80+ CRI C9 90+ CRI	HE High Efficacy (Std.) 	UNV 120-277V 120 120V 277 277V 347 347V 480 480V ¹⁰
	4 4' Length	36LED 36W LED 45LED 45W LED 56LED 56W LED 72LED 72W LED xx Custom lumen or watt: ___LM or ___W <small>* Max up to 10196lm or 72W per 4ft.</small>				

DISTRIBUTION		DIFFUSER		LATCHES	
PG	Parking Garage	SNGPG50 SNGPGLUM SNGPGPC SNGPGPC-F SNGPGPC-S	Impact Modified Clear Acrylic Parking garage lens (Std.) Lumieo, parking garage lens Polycarbonate, clear parking garage lens Polycarbonate, frosted parking garage lens Polycarbonate 5VA, frosted parking garage lens	(Blank) CL TPWP SSL TRSSL TRDT	White Acetal plastic latch Clear polycarbonate latch Tamper-proof white Acetal latch with nut and screw 316 Stainless Steel latch Tamper-proof 316 stainless steel latch with nut and screw Tamper-proof driver tool for TPWP and TRSSL
LP	Low Profile	TFLSCC5 TFLSL5 TFLSC5	50% DR, Impact Modified Clear Crepe Acrylic shallow low profile lens 50% DR, 74% LT, shallow Lumieo low profile lens Impact Modified Clear Acrylic shallow low profile lens (Std.)		

END PLUGS		MOUNTING		LED DRIVER ³	
(Blank) RP DC021 DC022	White 7/8" Dry Location plug White 7/8" Rubber plug One end 3/4" Hub, Water Tight Die Cast Fitting (Assembly for 1/2" Rigid Conduit) Both ends 3/4" Hub, Water Tight Die Cast Fitting (Assembly for 1/2" Rigid Conduit)	(Blank) MSM VH CCP	Surface Mount Modular surface mount V-Hook mount 10' cable kit	GR DM1 SD40 SDXX TD30/70 TDXX/YY ES566 LDE1	Generic, 0-10V 10% dim (Std.) Generic 0-10V 1% dim 40% / 100% Bi-Level Step dim XX% / 100% Bi-Level Step dim (Specify XX : 10% ~ 70%) 30% / 70% / 100% Tri-Level Step dim XX% / YY% / 100% Tri-Level Step dim (Specify XX, YY : 10% ~ 70%) eldoLED SOLDrive Natural Dimming to dark, 0-10V, 100% ~ 0.1% dim Hi-lume 1% EcoSystem LED driver with Soft-on, Fade-to-Black dimming technology, 100% ~ 1% dim
				 BLT	Bluetooth Mesh System (contact factory for more information)

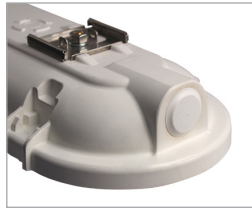
OPTIONS					
EMG8 EMG15 EMG20 EMG25 CWEM6 LT HT ELCU-200 GTD GTD10DIM F1 F2 AMB	1296 LUMEN EM Battery Backup (CEC Compliant EM) ^{1,2} 2430 LUMEN EM Battery Backup (CEC Compliant EM) ^{1,2} 3240 LUMEN EM Battery Backup (CEC Compliant EM) ^{1,2} 4050 LUMEN EM Battery Backup (CEC Compliant EM) ^{1,2} 6W EM Cold Weather -4°F (-20°C) ~ 131°F (55°C) Low Temperature for freezer (-40°F (-40°C) ~ 122°F (50°C)) High Temperature (-31°F (-35°C) ~ 140°F (60°C)) Fail-to-on Emergency lighting, UL924 ⁴ Bodine Generator Transfer Device Bodine Generator Transfer Device (0-10VDC Dimmer Override) Single fuse, must select 120V/277V/347V Double fuse, must select 208V/240V Anti-Microbial Coating (Matte Skye White)	WMS WDMS LRD-509P-x HC403 HRC-05 AUTANI CASAMBI AVI-ON	Wet Location Occupancy Sensor Wet Location Day Light Motion Sensor, Fail on IP66 Fixture external mount 0-10V SmartDIM or multi-level high/low dim control occupancy sensor, Fail on (*IR remote programmable), (See note 8 to select lens for "x") ^{6,7} Microwave bi-level Occupancy Sensor, adjustable via DIP switch ⁹ Handheld Remote for HC403 <Bluetooth> Autani / Keilton Bluetooth control ready options. Casambi Bluetooth control ready options. Avi-On Bluetooth control ready options. <small>* Please contact factory for Bluetooth control with sensor and other options</small>		

NOTES:

- Must specify voltage, not available with 347V.
- Contact factory for other emergency ballast options.
- To find an approved dimmer switch, please see table 1.
- Shipped separately.
- Std. temperature ranges from -22°F(-30°C) ~ 122°F(50°C).
 DW-LP4&8-72LED,88LED,100LED ranges from -40°F(-40°C) ~ 122°F(50°F).
- Its default setting can be found on the IR-TEC installation instructions.
- Order "RS-LRD" to adjust sensor setting.
- A: Standard cone shape Lens @ 15' height (up to 30' coverage)
- B: Extra wide cone shape Lens @ 10' height (up to 60' coverage)
- C: High bay cone shape Lens @ 30' height (up to 90' coverage)
- D: Standard round shape Lens @ 20' height (up to 40' coverage)
- F: Extra wide dome shape Lens @ 20' height (up to 80' coverage)
- G: Aisle way arch shape Lens @ 40' height (up to 120' coverage)
- Integrated Microwave bi-level Occupancy Sensor, adjustable via DIP switch(Mounted inside fixture).
- An additional step-down transformers is required for EM installation. Confirm pricing with the sales team.

DW-2G LED

END PLUG INFORMATION:



White 7/8" dry location plug

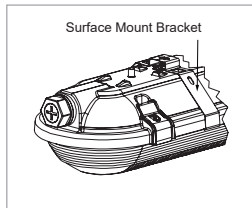


White 7/8" Rubber plug

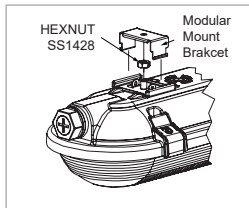


7/8" die cast aluminum fitting assembly for 1/2" rigid conduit

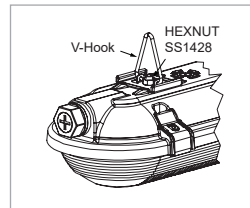
MOUNTING INFORMATION:



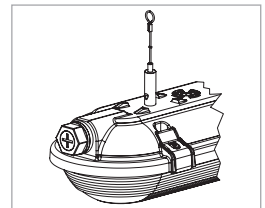
Surface Mount (Std.)



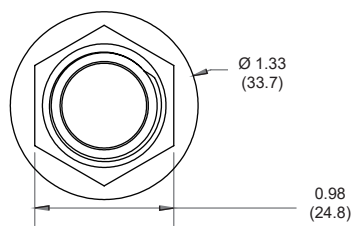
Modular Surface Mount



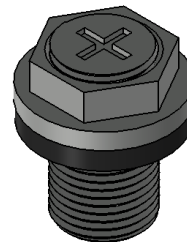
V-Hook Mount



10' Cable Suspended Mount



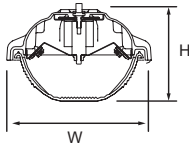
DC02



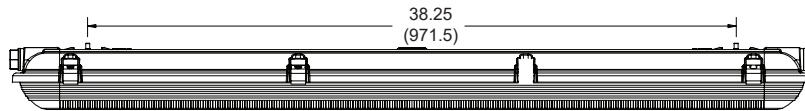
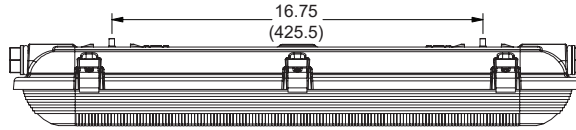
DW-2G LED

MOUNTING INFORMATION

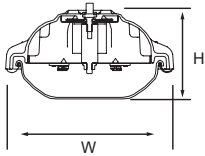
[Parking Garage]



Specifications: *Parking Garage*
Length: 26.54 (674.1), 47.14 (1197)
Width: 5.82 (147.8)
Height: 3.68 (93.5)



[Low Profile]



Specifications: *Low Profile*
Length: 26.54 (674.1), 47.14 (1197)
Width: 5.82 (148.6)
Height: 3.09 (78.5)

All dimensions are in inches (millimeters).

