

LAD8C

Project Name:	
Type:	



APPLICATION

8" Horizontal commercial frame-in is non-insulated ceiling design for high wattage application with lens. Ideal for medium to high ceilings for commercial installations.

FEATURES:

- Galvanized steel plaster frame: Quality galvanized steel ring riveted to elevated steel junction box tray.
- Housing can be removed from plaster frame for junction box access.
- Mounting: Bar hanger allows fixtures to affix to T-bar grid into wood or steel joist members.
- 16-gauge galvanized steel construction.
- Maximum 1-1/2" ceiling thickness.
- Toolless adjustments post installation.
- Unique optic allows high lumen transmission while concealing the LED light source resulting in efficient, inviting light and minimizing LED glare.
- Non-insulated ceilings or where insulation can be kept 3" from all side of housing.

JUNCTION BOX:

- Galvanized steel junction box with seven 1/2" knockouts, four pryouts, and snap on cover.
- Electrical connections are made through a single junction box door.
- Access to junction box from below ceiling after removal of reflector for easy maintenance.

BAR HANGERS:

- Pre-installed adjustable bar hangers for span 24".
- No clips required. Secure bar hanger to T-bars with wires or screws.
- Integral captive nails included for fast and easy installation.

LED:

- CREE LED technology.
- 50,000 hours.
- 4000K color temperature standard.
- 16W, 25W, 38W, 50W, 70W, 100W LED.
- Color Rendering Index: > 90
- Projected L70 hours: 60,000

ELECTRICAL:

- Input voltage: 120-277V
- 3 in 1 dimming: Triac (120V only), 0-10V (dim to 1%, 120-277V), ELV (120V only).
- Operating Temperature: -4°F (-20°C) ~ 104°F (40°C)
- Thermal protection.
- Surge protection (3kV line to line, 6kV line to earth).
- Protections: Output open load, over-current and short-circuit(hiccup), and over-temperature with auto recovery.
- Conducted and radiated EMI: Compliant with FCC CFR Title 47 Part 15 Class B (120 Vac)/ Class A (277 Vac) and EN55015 (CISPR 15) at 220/230/240 Vac.
- <ELCU-200>
- Guarantees emergency lighting remains ON or is turned on when power to the control device is lost.
- Interfaces with fire alarm panel or security system.
- "Watchdog" feature allows emergency loads to be controlled in tandem with normal power loads.
- UL listed for use in emergency circuits.

LISTING:

- ROHS.
- UL/CUL listed for damp locations with covered ceiling.
- UL/CUL wet location listed with "W" lens only.
- Listed to UL 1598 and UL 8750.
- Minimum 75°C supply conductors.
- CSA certified to US.
- Energy Star certified. ⁵
- 5 years limited warranty.
- 10 years limited warranty (optional). ^{7, 8}
- ARRA compliant (optional).
- BAA compliant (optional).

ORDERING INFORMATION

EXAMPLE: LAD8C-25L-40K-UNV-EMI15-WW-W-O60

MODEL		LED				COLOR TEMP.		VOLTAGE		LED DRIVER	
LAD8C	8" Commercial Frame	16L	16W LED	1458 lm	90.6 lm/W	-27K	2700K	UNV	120-277V	DM	- Triac (120V Only) - 0-10V (dim to 1%, 120-277V) - ELV (120-277V)
		25L	25W LED	2302 lm	92.1 lm/W	-30K	3000K	347	347V ⁴	010V	0-10V dim to 1%
		38L	38W LED	3035 lm	82 lm/W	-35K	3500K			LDE1	5%, Lutron (Ecosystem) ²
		50L	50W LED	3904 lm	80.8 lm/W	-40K	4000K (Std.)			MU050	1%, Lutron (Soft Fade to Black, Ecosystem) ²
		70L	70W LED	5920 lm	84.2 lm/W	-50K	5000K			ED560	0-10V dim to 1% for -275K (Tunable White)
		100L	100W LED	7070 lm	70 lm/W	-275K	Tunable white			RDMX	eldoLED LightShape DALI dim to dark, 0.1% ~ 100%
		107L	107W LED	7830 lm	73.2 lm/W		2700-5000K (Max. 50W) ³			SDXX	eldoLED POWERdrive DMX/RDM Full-color, 0.1% ~ 100% XX% / 100% Bi-Level Step dim (Specify XX : 10%~70%) ¹²

EM ^{9, 10, 13}		REFLECTOR		TRIM RING		LENS		OPTIC	
EMI8	1296 LUMEN EM Battery Backup	WW	White Reflector w/ White Plastic Ring	(Blank)	White Trim Ring	(Blank)	Dry / Damp location	O20	Narrow
EMI15	2430 LUMEN EM Battery Backup	CW	Clear Reflector w/ White Plastic Ring	BK	Black Trim Ring	W	White Smooth Splay w/ Frosted Lens (Wet Location) ¹¹	O40	Medium
EMI25	4050 LUMEN EM Battery Backup	PLW	Platinum Haze Reflector w/ White Plastic Ring					O60	Wide (Std.)
INT	EM Pilot Located on Reflector							WA	Wall Wash

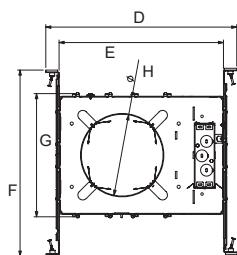
8" COMMERCIAL NEW CONSTRUCTION FRAME

OPTIONS		LIGHTING CONTROL SYSTEM	
ARRA	Assembled in USA for Buy American Act	VRF	<Lutron Vive System Enabled>
BAA	BAA(Buy American Act) and BABA(Build America Buy America) compliant	FCJS0	Vive Integral fixture control (RF only, for Lutron EcoSystem drivers)
ELCU-200	Fail-to-on Emergency lighting, UL924 ¹	FCJSE	FCJS-010, Vive Attached fixture control (RF only for 0-10V drivers)
GTD	Bodine Generator Transfer Device	FCJS0EM	FCJS-ECO, Vive Attached fixture control (RF only for Lutron EcoSystem drivers)
GTD10DIM	Bodine Generator Transfer Device (0-10VDC Dimmer Override)	FCJSEEM	FCJS-010-EM, UL 924 Emergency (Must be ordered with FCJS-010)
FRAME	Rough-in frame pre-ship request ⁶		FCJS-ECO-EM, UL 924 Emergency (Must be ordered with FCJS-ECO)
O10W	Optional 10 Years Limited Warranty ^{7,8}		
SF	Self-flanged trim	PPA102S	<Bluetooth> Bluetooth Powerpack (Consult factory for installation location)

NOTES:

1. Shipped separately.
2. Available with 16L, 25L and 38L only.
3. Must be ordered with ED560 or MU050 driver.
4. Only available up to 38W.
5. 38L model is exempt.
6. LED driver and EM (if selected) will be included.

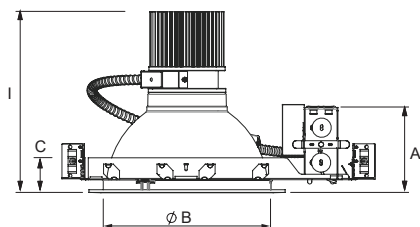
7. This limited warranty covers electrical parts only and does not apply to labor, equipment lease, or defect from improper installation or operation.
8. Available with 0-10V dimming only. (Up to 50W)
9. Contact factory for other emergency battery backup options.
10. Must specify voltage, not available with 347V, 480V.
11. There is a 33% lumen decrease.
12. Provided with a remote driver box.
13. EMI15 cannot be used with 11L or Lower Wattage, and EMI25 cannot be used with 16L or Lower Wattage.



Dimensions

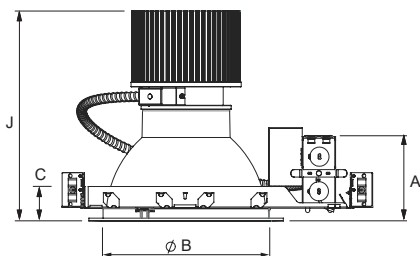
- D: 15-5/16" (389.2)
E: 12-19/32" (320)
F: 16-1/8" (410)
G: 9-7/16" (240)
H: 6-1/4" Dia. (159)

All dimensions are in inches.
Drawings are for dimensional detail information only.



Dimensions (16W, 25W, 38W, 50W)

- A: 3-15/16" (100.6)
B: 6-5/16" Dia. (160.6)
C: 1-1/2" (38)
I: 8-1/2" (214.9)



Dimensions (70W, 100W)

- A: 3-15/16" (100.6)
B: 6-5/16" Dia. (160.6)
C: 1-1/2" (38)
J: 9-15/16" (251.9)

COMPATIBLE DIMMER SWITCH (TABLE 1)

Model #	Brand	Compatible Dimmer Switch	
DM (0-10V, dim to 1%)	-	<Leviton>	IllumaTech series (IP710-DL)
		<Lutron>	Nova series (NFTV-xx), Diva series (DVTV-xx)
DM (120Vac for Triac, ELV)	-	<Lutron>	S-603PG, DVCL-153P, DV-600P, TGCL-153P, S600P, DVELV-303P, SELV-300P, TG-600P, LG-600P, CT-103P, MAELV-600, FAELV-500
		<Leviton>	IPI06-1LZ, 6631-2, VPE06, 6683-IW, 6161, 6633-P, IPE04
		<Cooper>	DLC03P, SLC03P, DAL06P
		<Lightolier>	ZP260QEW
ED560	eldoLED DUALdrive	<Lunatone>	SS-LUNAT PS2 30mA SS-LUNAT Touch or BT SS-LUNAT Comm
LDE1	Lutron Hi-lume 1% EcoSystem	<Lutron>	PowPak Dimming Modules: RMJ-ECO32-DV-B, FCJ/FCJS-ECO Energi Savr Node (120V only): QSN-1ECO-S, QSN-2ECO-S GRAFIK Eye QS/Homeworks QS control unit (120V only): QSGRJ- E(wireless) QSGR- E Quantum Hub (120V only): QP2- _2C/4C/6C/8C Homeworks QS/myRoom Plus power module (120V only): LQSE-2ECO-D
LDE5	Lutron 5-Series EcoSystem		

LAD8C

BEAM ANGLE (OPTIC) TABLE

Wattage	LAD4-CW			LAD6-CW			LAD8-CW		
	O20	O40	O60	O20	O40	O60	O20	O40	O60
16W	23.1°	42.8°	57.8°	21.6°	36.8°	56.6°	23.1°	39°	58.2°
25W	25°	44.3°	58.9°	23.8°	39.1°	58.1°	24.7°	40.5°	59.1°
38W	34.8°	53.6°	60.2°	31.9°	48.8°	59.9°	33.1°	53.9°	61.4°
50W	34.3°	51.2°	59.7°	31.8°	47.4°	58.7°	33.4°	50.1°	61.7°
Wattage	LAD4-WW			LAD6-WW			LAD8-WW		
	O20	O40	O60	O20	O40	O60	O20	O40	O60
16W	22.9°	40.8°	52.7°	22.7°	40.7°	55.2°	22.5°	39.2°	57.8°
25W	24.3°	41.6°	53.5°	24.6°	41.5°	56.3°	24.5°	40.3°	58.7°
38W	34.3°	48.5°	55.6°	34.1°	50.8°	58°	33.5°	49.2°	62.5°
50W	33.7°	46.9°	55.3°	33.6°	48.6°	58°	33.7°	47.3°	63.3°
Wattage	LAD4-PLW			LAD6-PLW			LAD8-PLW		
	O20	O40	O60	O20	O40	O60	O20	O40	O60
16W	22.7°	42.1°	54.9°	22.2°	40.4°	54.6°	23°	39.3°	57.7°
25W	24.7°	43.8°	55.5°	24.6°	42°	55.3°	24.5°	40.6°	58.5°
38W	35.6°	51.9°	58°	34°	49°	58°	33.3°	50.1°	60.7°
50W	34.9°	49.3°	57.5°	33.3°	48.5°	57.4°	33.6°	47.4°	61.3°

