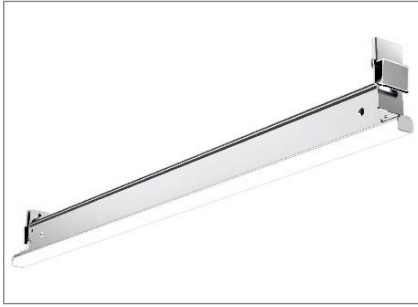


TBL LED

Project Name:

Type:



CASAMBI

APPLICATION

These T-bar linear LED luminaire can create infinite and limitless geometric configurations on the ceiling. Ideal applications include architectural, commercial and retail as well as offices, conference rooms, lobbies and corridors.

MOUNTING:

- T-bar ceiling with 9/16" and 15/16".

LED:

- High quality array LEDs.
- Color Rendering Index: >80
- Color temperature: 3000/3500/4000(K)
- L70 >50,000 hrs
- Beam angle
- G1: 2FT- 123°, 4FT- 128°
- G2: 2FT, 4FT- 120°

ELECTRICAL:

- 0-10V dimming (12% - 100%)
- 120-277V, 50/60Hz
- Power Factor: >0.90
- THD: <20%
- Tested dimmer list.
- Remote driver box standard
(3 units per driver, remote distance limit:
Cat5 cable for 2FT: 6ft
Cat5 cable for 4FT: 8ft
12ft Cat5 cable can be an optional upon request.)

LISTING:

- UL listed.
- DLC listed.
- Suitable for damp location.
- 5 years warranty.

CONFIGURATIONS

Series	Size	Model #	AC Input	Lumen Output	Lumen Efficiency	Mounting
TBL LED	2FT	10LED	10W	1100 lm	110 lm/W	G1
	4FT	20LED	20W	2400 lm	120 lm/W	
	2FT	10LED	10W	1300 lm	130 lm/W	G2
	4FT	20LED	20W	2600 lm	130 lm/W	

ORDERING INFORMATION

EXAMPLE: TBL-2-10LED-35K-UNV-G1

MODEL	LENGTH		LED		COLOR TEMP.		VOLTAGE		MOUNTING	
TBL	2	2' Length	10LED	10W LED	-30K	3000K	UNV	120-277V	G1	9/16" T-bar Ceiling Grid
	4	4' Length	20LED	20W LED	-35K	3500K			G2	15/16" T-bar Ceiling Grid
					-40K	4000K			SS	9/16" Screw Slot Ceiling Grid

OPTIONS		LIGHTING CONTROL SYSTEM		LED DRIVER FOR TBL ²		DIMMING	
EC	12ft extension cable (for use with 8ft standard cable)	PPA102S	<Bluetooth> Bluetooth Powerpack (Consult factory for installation location)	TBL-2-DRIVER	30W LED Driver kit for up to 3 TBL-2-10LED	DM DM1	0-10V 10% Dim (Std.)
BK	Black finish end cap			TBL-4-DRIVER	60W LED Driver kit for up to 3 TBL-4-20LED		0-10V 1% Dim
		CASAMBI	Contact factory for CASAMBI READY options				

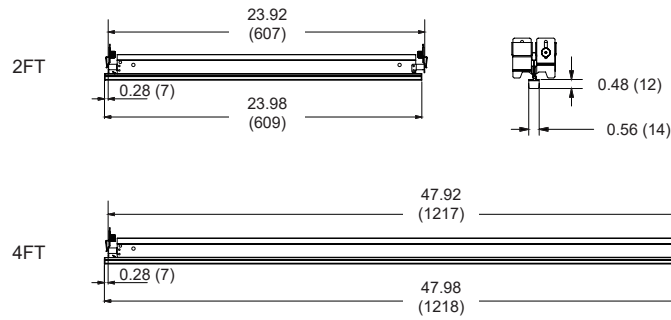
NOTES:

- Contact factory for custom pattern.
- Required for TBL.

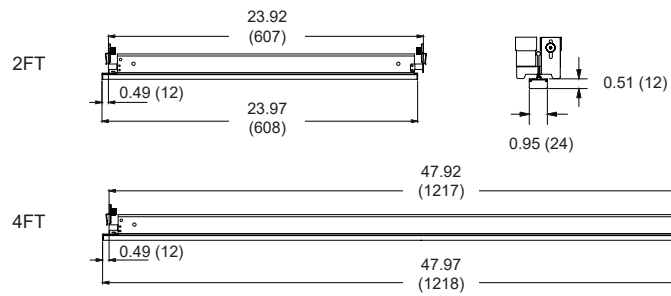
TBL LED

All dimensions are in inches (millimeters).

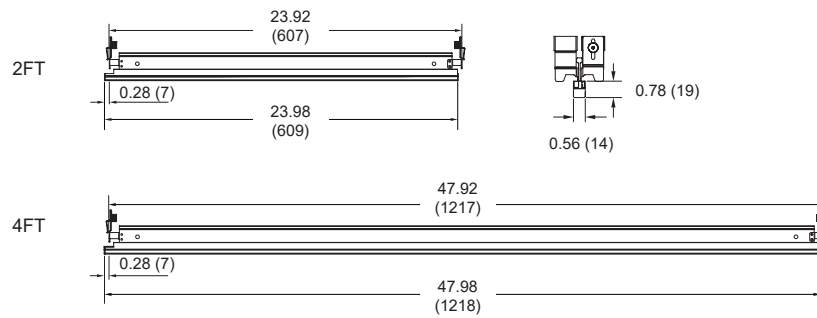
G1



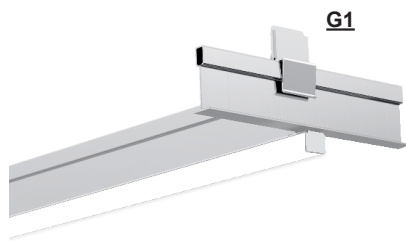
G2



SS



TBL LED



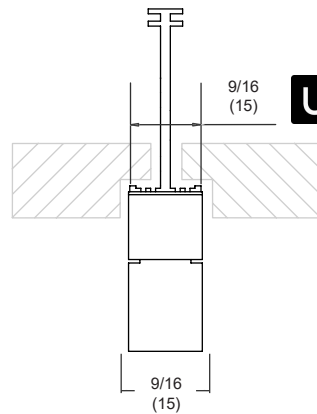
G1

9/16" Flat
Fine Line Ceiling

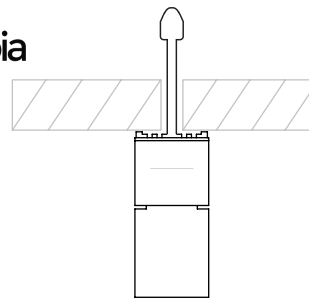


Suprafine® XL

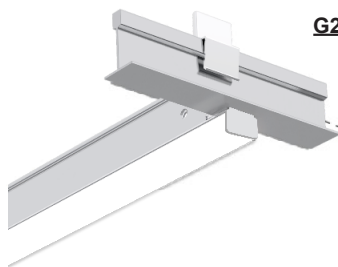
* Compatible with Suprafine XL ceiling from Armstrong World Industries company.
Compatible with Tegular and Lay-in ceiling tile.



Utopia



STANDARD T-BAR



G2

15/16" Flat
T-Grid Ceiling

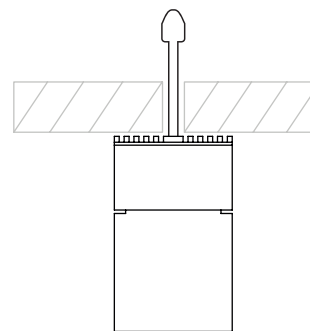
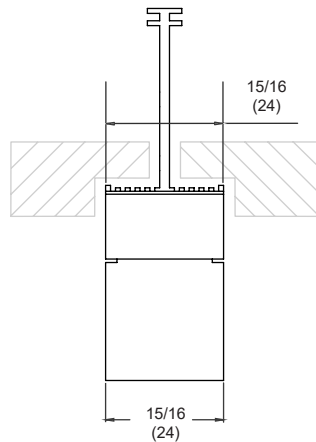


Prelude® XL



Clean Room

* Compatible with Prelude XL and Clean Room ceiling from Armstrong World Industries company.
Compatible with Tegular and Lay-in ceiling tile.



STANDARD T-BAR

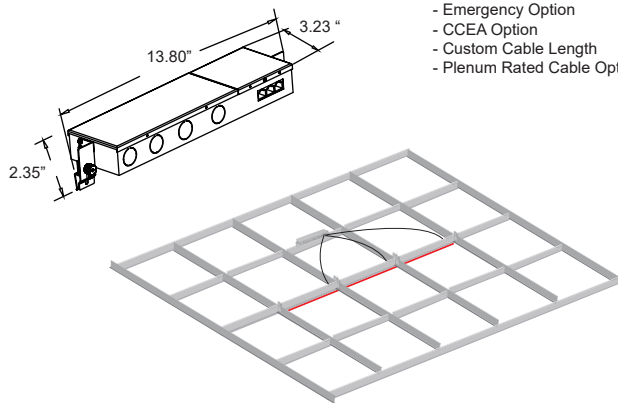
TBL LED

Easy Wiring And Mess Free Save Cost Without Compromising Style

Brilliant design and intuitive engineering fearlessly combine to deliver unprecedented performance. TBL series' striking contrast of effortless style and urban edginess makes a distinct statement in any suspending ceiling space. It can be parallel connected up to 6ft (2' fixture) and 12ft (4' fixture) max per power supply. Max distance from fixtures to power supply is 8 feet with 24 AWG cable. RJ45 terminal make easy installation and safe wiring. (optional 12ft extension cable available)

Remote LED Driver

It can be parallel connected up to 6ft (2' fixture) and 12ft (4' fixture) max per power supply. Max distance from fixtures to power supply is 8 feet with 24 AWG cable. RJ45 terminal make easy installation and safe wiring.



- Optional Functions:**
- 24V DC Options
 - Emergency Option
 - CCEA Option
 - Custom Cable Length
 - Plenum Rated Cable Option

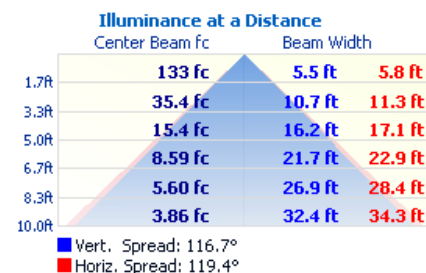


IC Rated
UTOPIA's T-grid LED is IC rated, which has additional insulation materials either by code or design requirement for installation in suspended ceilings.

COMPATIBLE DIMMER SWITCH

Model #	Brand	Compatible Dimmer Switch	
(Blank)	-	<Lutron>	Diva DDTV

TBL-2-10LED-G2



TBL-4-20LED-G2

