

DW-2G LED

Project Name:

Type:



APPLICATION

LED premium grade enclosed and gasket fixture. For use in indoor application where dust and moisture resistance and other non-hazardous contaminants. Also in dirty or wet environments including food processing, cold storage, kitchens, parking garages, car washes, covered canopies, pedestrian tunnels, concourses, and industrial.

FEATURES:

- Compression molded self-extinguishing fiberglass reinforced polyester compound with UL 5V flame rating (ASTM D635-74).
- Rigid one piece housing construction.
- The housing is sealed against dust and moisture.
- EN-seal™ gasketing provides superior resistance to moisture absorption versus conventional gasketing.
- Molded latch pockets compatible with standard and tamper-proof latches in white acetal, and stainless steel.
- Standard housing available with one 7/8" conduit entry point on either or both ends.

MOUNTING:

- Standard 316 stainless steel brackets for surface mount provided as a standard.
- Optional flush mount brackets, serves as a mounting point for either a snap-in-place mount or a hook.
- Two 1/4-28 brass studs molded into back of housing for attachment of optional mounting brackets.

LENS:

- Inline thermoformed low profile lenses available in 50% DR acrylic in clear, crepe and Lumieo.
- Lenses for parking garage applications available in 50% DR clear acrylic, polycarbonate and Lumieo.
- Lens retained by 6 for 2ft and 8 for 4ft captive flush mounted latches.

LED:

- Color Temperature: 2700/3000/3500/4000/5000 (K).
- LED Module: High efficiency up to 162 LPW.
- Calculated L70: 122,000 hours
- Reported L70: +60,000 hours
- Poke in wire connectors.
- Color Rendering Index: 80+

ELECTRICAL:

- High power factor electronic driver, operate from a 120~277 Vac input range, 50 / 60 Hz.
- Universal Lighting Everline : 0-10V Dim to 1%(ULT)
- Generic: 0-10V Dim to 10%(GR).
- Power Factor: +0.9
- Efficiency: +85%
- Ambient Operating Temperature:
-22°F (-30°C) ~ 122°F (50°C) (Std.)
-40°F (-40°C) ~ 122°F (50°C) (with LT option)
-31°F (-35°C) ~ 140°F (60°C) (with HT option)
- Constant Current, Class 2
- <ELCU-200>
- Guarantees emergency lighting remains ON or is turned on when power to the control device is lost.
- Interfaces with fire alarm panel or security system.
- "Watchdog" feature allows emergency loads to be controlled in tandem with normal power loads.
- UL listed for use in emergency circuits.

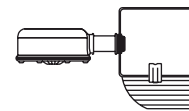
LISTING:

- F1 weatherability rating.
- UL 5V flame rating (ASTM D635-74).
- UL/cUL listed for damp and wet location.
- IP65, IP66 and IP67.
- IP69K Rated using polycarbonate and acrylic parking garage lenses (#SNGPG50, SNGPGPC, SNGPGPC-F/S).
- NSF International certified for NSF/ANSI Standard 2 - Food Equipment.
- Bluetooth Mesh System available, please contact factory for more information.
- ARRA and BAA compliant.

CONFIGURATIONS

	Model #	AC Input	Lumen Output	Lumen Efficiency
2FT	18LED	18W	2548 lm	141.5 lm/W
	20LED	20W	2831 lm	
	27LED	27W	3823 lm	
	36LED	36W	5097 lm	
4FT	36LED	36W	5097 lm	
	45LED	45W	6372 lm	
	56LED	56W	7930 lm	
	72LED	72W	10196 lm	

: Based on 5000K.



WMS, WDMS, LOD-500S-x

HC403 FACTORY SETTING (TABLE 2)


Detection Area	100%
Hold-time	5 sec
Daylight sensor	Disable
Stand-by period (tri-level control)	10 sec
Stand-by dimming level	10%

* See a separate attachment to find more setting options.

LED GASKET ENCLOSURE VAPORTITE


ORDERING INFORMATION

EXAMPLE: DW-2G-4-45LED-50K-HE-UNV-SNGPG50

MODEL	LENGTH		LED		COLOR TEMP.		CRI		EFFICACY		VOLTAGE	
DW-2G	2	2' Length	18LED 20LED 27LED 36LED	18W LED 20W LED 27W LED 36W LED	-27K -30K -35K -40K -50K	2700K 3000K 3500K 4000K 5000K	(Blank) C9	80+ CRI 90+ CRI	HE	High Efficacy (Std.) 	UNV 120 277 347 480	120-277V 120V 277V 347V 480V ¹⁰
	4	4' Length	36LED 45LED 56LED 72LED	36W LED 45W LED 56W LED 72W LED								

* Contact factory for custom wattage or lumen requirement.

DISTRIBUTION		DIFFUSER		LATCHES	
PG	Parking Garage	SNGPG50 SNGPGLUM SNGPGPC SNGPGPC-F SNGPGPC-S	Impact Modified Clear Acrylic Parking garage lens (Std.) Lumieo, parking garage lens Polycarbonate, clear parking garage lens Polycarbonate, frosted parking garage lens Polycarbonate 5VA, frosted parking garage lens	(Blank) CL TPWP SSL TRSSL TRDT	White Acetal plastic latch Clear polycarbonate latch Tamper-proof white Acetal latch with nut and screw 316 Stainless Steel latch Tamper-proof 316 stainless steel latch with nut and screw Tamper-proof driver tool for TPWP and TRSSL
LP	Low Profile	TFLSCC5 TFLSL5 TFLSC5	50% DR, Impact Modified Clear Crepe Acrylic shallow low profile lens 50% DR, 74% LT, shallow Lumieo low profile lens Impact Modified Clear Acrylic shallow low profile lens (Std.)		

END PLUGS		MOUNTING		LED DRIVER	
(Blank) RP DC021 DC022	White 7/8" Dry Location plug White 7/8" Rubber plug One end 3/4" Hub. Water Tight Die Cast Fitting (Assembly for 1/2" Rigid Conduit) Both ends 3/4" Hub. Water Tight Die Cast Fitting (Assembly for 1/2" Rigid Conduit)	(Blank) MSM VH CCP	Surface Mount Modular surface mount V-Hook mount 10' cable kit	GR DM1 ULT SD40 SDXX TD30/70 TDXX/YY ES566 LDE1	Generic, 0-10V 10% dim (Std.) ³ Generic 0-10V 1% dim Universal Everline 0-10V 1% dim ³ 40% / 100% Bi-Level Step dim XX% / 100% Bi-Level Step dim (Specify XX : 10% ~ 70%) 30% / 70% / 100% Tri-Level Step dim XX% / YY% / 100% Tri-Level Step dim (Specify XX, YY : 10% ~ 70%) eldoLED SOLOdrive Natural Dimming to dark, 0-10V, 100% ~ 0.1% dim Hi-lume 1% EcoSystem LED driver with Soft-on, Fade-to-Black dimming technology, 100% ~ 1% dim
				 BLT	Bluetooth Mesh System (contact factory for more information)

OPTIONS			
EMG8 EMG15 EMG20 EMG25 CWEM6 LT HT ELCU-200 GTD GTD10DIM	1296 LUMEN EM Battery Backup (CEC Compliant EM) ^{1,2} 2430 LUMEN EM Battery Backup (CEC Compliant EM) ^{1,2} 3240 LUMEN EM Battery Backup (CEC Compliant EM) ^{1,2} 4050 LUMEN EM Battery Backup (CEC Compliant EM) ^{1,2} 6W EM Cold Weather -4°F (-20°C) ~ 131°F (55°C) Low Temperature for freezer (-40°F (-40°C) ~ 122°F (50°C)) High Temperature (-31°F (-35°C) ~ 140°F (60°C)) Fail-to-on Emergency lighting, UL924 ⁴ Bodine Generator Transfer Device Bodine Generator Transfer Device (0-10VDC Dimmer Override)	GLR GMF WMS WDMS LRD-509S-x AMB HC403 HRC-05 EFS01RE RM51	Fast Blow Fuse ¹ Slow Blow Fuse ¹ Wet Location Occupancy Sensor Wet Location Day Light Motion Sensor, Fail on Fixture external mount 0-10V SmartDIM or multi-level high/low dim control occupancy sensor, Fail on (*IR remote programmable), (See note 8 to select lens for "x") ^{6,7} Anti-Microbial Coating (Matte Skye White) Microwave bi-level Occupancy Sensor, adjustable via DIP switch ⁹ Handheld Remote for HC403 Fixture External mount 0-10V Bi-Level Dimming Occupancy PIR Sensor. Daylight Harvesting. (adjustable by Remote Control only-RM51) Handheld Remote for EFS01RE

LIGHTING CONTROL SYSTEM	
PPA102S	<Bluetooth> Bluetooth Powerpack (Consult factory for installation location)
CASAMBI	Contact factory for CASAMBI READY options

NOTES:

- Must specify voltage, not available with 347V.
- Contact factory for other emergency ballast options.
- To find an approved dimmer switch, please see table 1.
- Shipped separately.
- Std. temperature ranges from -22°F(-30°C) ~ 122°F(50°C).
DW-LP4&8-72LED,88LED,100LED ranges from -40°F(-40°C) ~ 122°F(50°F).
- Its default setting can be found on the IR-TEC installation instructions.
- Order "RS-LRD" to adjust sensor setting.

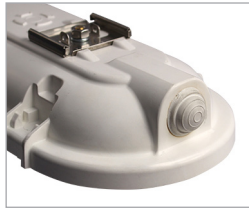
- A: Standard cone shape Lens @ 15' height (up to 30' coverage)
- B: Extra wide cone shape Lens @ 10' height (up to 60' coverage)
- C: High bay cone shape Lens @ 30' height (up to 90' coverage)
- D: Standard round shape Lens @ 20' height (up to 40' coverage)
- F: Extra wide dome shape Lens @ 20' height (up to 80' coverage)
- G: Aisle way arch shape Lens @ 40' height (up to 120' coverage)
- Integrated Microwave bi-level Occupancy Sensor, adjustable via DIP switch(Mounted inside fixture).
- An additional step-down transformers is required for EM installation. Confirm pricing with the sales team.

DW-2G LED

END PLUG INFORMATION:



White 7/8" dry location plug

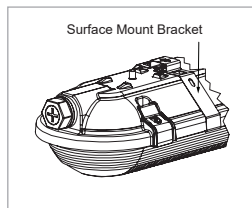


White 7/8" Rubber plug

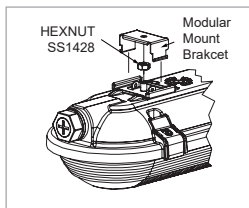


7/8" die cast aluminum fitting assembly for 1/2" rigid conduit

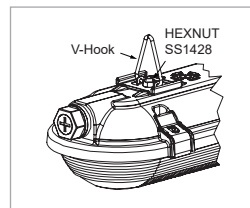
MOUNTING INFORMATION:



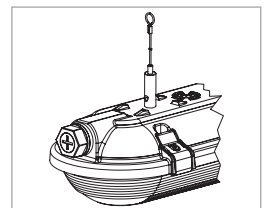
Surface Mount (Std.)



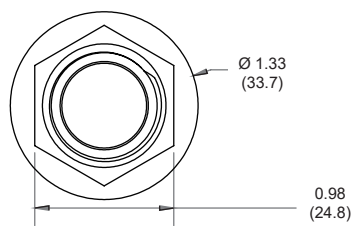
Modular Surface Mount



V-Hook Mount



10' Cable Suspended Mount



DC02

