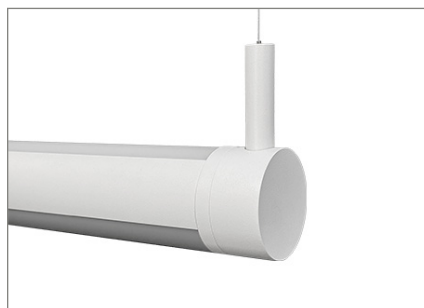


## Rotational LED



## APPLICATION

The RONDO is a featured Architectural Linear fixture. Housing is formed by extruded aluminum with a highly reflective die-formed white painted steel reflector. The click-in acrylic lens has a matte finish and a diffuser which is removable for maintenance. It is used for multiple applications such as commercial, general office, banking, retail and educational environments.

**MOUNTING:**

- Pendant.
- Wall mount.

**LED:**

- High quality array LEDs.
- LM80
- Color Temperature: 2700/3000/3500/4000/5000 (K).
- Color Rendering Index: > 80 (optional >90).
- Nominal Lamp Life: 100,000 hours.
- Reported L70 hours: +60,000 (55°C).
- Direct and Indirect light as standard.

**ELECTRICAL:**

- Remote box provided for led driver and other options.
- High power factor electronic driver, operate from a 120 ~ 277 Vac input range, 50 / 60 Hz.
- Features included over voltage protection, surge, short circuit protection and over load protection.
- Power Factor: typical > 0.95, THD <20, meets Class1 or Class 2 circuit.
- 0-10V dimmable driver as standard.
- 0-10VDC dimming 1%~100%.
- Operating temperature: -4°F (-20°C) ~ 122°F (50°C).

**FINISH:**

- Standard powder-coat textured white painted finish on exposed trim, consult factory for custom colors.
- Comes with snap-in acrylic lens as standard.

**LISTING:**

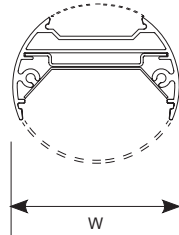
- UL / CUL listed.
- UL listed for dry & damp location.
- Assembled in USA (optional).
- BAA compliant (optional).
- TAA compliant (optional).
- 5 years limited warranty.
- 7 or 10 years limited warranty. (optional) <sup>5</sup>
- Bluetooth Mesh System available, please contact factory for more information.

## CONFIGURATIONS

Series	Size	Model #	AC Input	Fixture Lumen Output (4000K)		Lumen Efficiency (4000K)
RONDO2	2'	18L/18L	19.8W	1380.0 lm (57.6% Down) / 1015.8 lm (42.4% Up)		2395.8 lm
		27L/18L	24.75W	1886.7 lm (63% Down) / 1108.0 lm (37% Up)		2994.7 lm
		27L/27L	29.7W	2070.0 lm (57.6% Down) / 1523.7 lm (42.4% Up)		3593.7 lm
		36L/18L	29.7W	2353.8 lm (65.5% Down) / 1239.9 lm (34.5% Up)		3593.7 lm
		48L/18L	36.3W	2837.4 lm (64.6% Down) / 1554.9 lm (35.4% Up)		4392.3 lm
		48L/27L	41.25W	2959.8 lm (59.3% Down) / 2031.4 lm (40.7% Up)		4991.2 lm
		54L/18L	39.6W	3497.9 lm (73% Down) / 1293.7 lm (27% Up)		4791.6 lm
		54L/27L	44.55W	3530.8 lm (65.5% Down) / 1859.7 lm (34.5% Up)		5390.5 lm
	3'	18L/18L	29.7W	2070.0 lm (57.6% Down) / 1523.7 lm (42.4% Up)		3593.7 lm
		27L/18L	37.2W	2830.1 lm (63% Down) / 1662.1 lm (37% Up)		4492.2 lm
		27L/27L	44.55W	3105.0 lm (57.6% Down) / 2285.5 lm (42.4% Up)		5390.5 lm
		36L/18L	44.55W	3530.8 lm (65.5% Down) / 1859.7 lm (34.5% Up)		5390.5 lm
		48L/18L	54.45W	4256.1 lm (64.6% Down) / 2332.3 lm (35.4% Up)		6588.4 lm
		48L/27L	61.8W	4439.7 lm (59.3% Down) / 3047.1 lm (40.7% Up)		7486.8 lm
		54L/18L	59.4W	5246.8 lm (73% Down) / 1940.6 lm (27% Up)		7187.4 lm
		54L/27L	66.8W	5296.2 lm (65.5% Down) / 2789.6 lm (34.5% Up)		8085.8 lm
	4'	18L/18L	39.6W	2760.0 lm (57.6% Down) / 2031.6 lm (42.4% Up)		4791.6 lm
		27L/18L	49.5W	3773.4 lm (63% Down) / 2216.1 lm (37% Up)		5989.5 lm
		27L/27L	59.4W	4139.9 lm (57.6% Down) / 3047.5 lm (42.4% Up)		7187.4 lm
		36L/18L	59.4W	4707.7 lm (65.5% Down) / 2479.7 lm (34.5% Up)		7187.4 lm
		48L/18L	72.6W	5762.7 lm (64.6% Down) / 3109.7 lm (35.4% Up)		8784.6 lm
		48L/27L	82.5W	5919.6 lm (59.3% Down) / 4062.9 lm (40.7% Up)		9982.5 lm
		54L/18L	79.2W	6995.7 lm (73% Down) / 2587.5 lm (27% Up)		9583.2 lm
		54L/27L	89.1W	7061.6 lm (65.5% Down) / 3719.5 lm (34.5% Up)		10781.1 lm
	8'	18L/18L	79.2W	5519.9 lm (57.6% Down) / 4063.3 lm (42.4% Up)		9583.2 lm
		27L/18L	99W	7546.8 lm (63% Down) / 4432.2 lm (37% Up)		11979 lm
		27L/27L	118.8W	8279.9 lm (57.6% Down) / 6094.9 lm (42.4% Up)		14374.8 lm
		36L/18L	118.8W	9415.5 lm (65.5% Down) / 4959.3 lm (34.5% Up)		14374.8 lm
		48L/18L	145.2W	11349.7 lm (64.6% Down) / 6219.5 lm (35.4% Up)		17569.2 lm
		48L/27L	165W	11839.2 lm (59.3% Down) / 8125.8 lm (40.7% Up)		19965 lm
54L/18L		158.4W	13991.5 lm (73% Down) / 5174.9 lm (27% Up)		19166.4 lm	
54L/27L		178.2W	14123.2 lm (65.5% Down) / 7439.0 lm (34.5% Up)		21562.2 lm	

	Multiplier		
CCT	3000K	3500K	5000K
Down only	0.9642	0.9822	1.0357

# RONDO2-UD



Specifications: RONDO2-UD

Width: 2-1/2 Dia. (63)

All dimensions are in inches (millimeters).

**EXAMPLE: RONDO2-IND-UD-4-D27L-U18L-40K-UNV**


MODEL	DISTRIBUTION		ROW <sup>1</sup>		SECTION <sup>2</sup>		LED Downlight (per/4ft section)		LED Uplight (per/4ft section)	
<b>RONDO2-IND</b> (Individual Mount) <b>RONDO2-CON</b> (Continuous Row Mount)	<b>UD</b>	Down and Up light distribution	<b>xx</b>	Specify nominal overall row length in 4' increments (Continuous runs)	<b>2</b>	2' Length	<b>D18L</b>	18W LED (598 lm/ft)	<b>U18L</b>	18W LED (598 lm/ft)
					<b>3</b>	3' Length	<b>D27L</b>	27W LED (898 lm/ft)	<b>U27L</b>	27W LED (898 lm/ft)
					<b>4</b>	4' Length	<b>D36L</b>	36W LED (1197 lm/ft)		
					<b>8</b>	8' Length <sup>3</sup>	<b>D48L</b>	48W LED (1597 lm/ft)		
					<b>X</b>	Custom Length <sup>10</sup>	<b>D54L</b>	54W LED (1796 lm/ft)		
* Number of circuit(s) should be determined by the customer prior to ordering the continuous run considering the AC input voltage and total run wattage.							* Maximum wattage per 4ft section : 75W (up & down) * Contact factory for custom wattage or lumen requirement.			

COLOR TEMP.		SEPARATE CCT.		CRI		MOUNTING	
<b>(Blank)</b>	Leave blank if you wish to have different CCT for up and down, and fill out next section	<b>(Blank)</b>	Leave blank if you chose to have the same CCT for up and down in the previous section.	<b>(Blank)</b>	80+ CRI	<b>(Blank)</b>	Pendant
<b>-27K</b>	2700K <sup>12</sup>	<b>DXXUYY</b>	Indicate 27,30,35,40, or 50 for XX and YY (D represents Downlight, U represents Uplight)	<b>C9</b>	90+ CRI <sup>7</sup>	<b>W5</b>	5" Wall Mount
<b>-30K</b>	3000K					<b>W12</b>	12" Wall Mount
<b>-35K</b>	3500K						
<b>-40K</b>	4000K						
<b>-50K</b>	5000K						

VOLTAGE		EM SECTION <sup>4</sup>		FIXTURE FINISH		CORD FINISH		CANOPY FINISH	
<b>UNV</b>	120-277V	<b>(Blank)</b>	None EM	<b>(Blank)</b>	Matte White RAL#9003 (Std.)	<b>(Blank)</b>	White (Std.)	<b>(Blank)</b>	White (Std.)
<b>120</b>	120V	<b>1SE</b>	1 Section	<b>*BK</b>	Black RAL #9011	<b>*BKC</b>	Black	<b>*BC</b>	Black Canopy
<b>277</b>	277V	<b>2SE</b>	2 Section	<b>**CC</b>	Custom Color			<b>*SC</b>	Silver Canopy
<b>347</b>	347V <sup>6</sup>	<b>xSE</b>	x Section	<b>*AMB</b>	Anti-Microbial Coating (Matte Skye White)			<b>**CSS</b>	Custom Canopy Color (White is Std.)
* Non-standard finish with extra charge. ** Additional charge & set up fee.									

CEILING TYPE		SUSPENSION LENGTH		LED DRIVER	
<b>X1</b>	15/16" grid T-bar ceiling	<b>AC48</b>	Adjustable Aircraft Cable Canopy 48"L	<b>(Blank)</b>	0-10V dim to 1% (Std.) (dim both uplight and downlight simultaneously)
<b>X2</b>	Hard ceiling	<b>AC96</b>	Adjustable Aircraft Cable Canopy 96"L	<b>UDSD</b>	Separate Dimming Control of Uplight and Downlight (0-10V dim to 1%) <sup>13,14</sup>
<b>X3</b>	Sloped Hard ceiling			<b>SP</b>	Separate Power Control for Uplight and Downlight
<b>X4</b>	9/16" T-bar ceiling	<b>ST24</b>	Stem Canopy 24"L	<b>ES566</b>	eldoLED SOLOdrive Natural Dimming to dark, 0-10V, 100% ~ 0.1% dim
<b>X5</b>	9/16" Screw Slot ceiling	<b>ST48</b>	Stem Canopy 48"L	<b>SD40</b>	40% / 100% Bi-Level Step dim
* Contact factory for custom length.				<b>SDXX</b>	XX% / 100% Bi-Level Step dim (Specify XX : 10% ~ 70%)
				<b>PHSR</b>	Philips Xitanium Sensor-Ready, Dali 5%~100% dim.
				<b>PHDL</b>	Philips Xitanium DALI driver, Dim to 5%
				<b>TDM</b>	Triac Dim. (120V only)
				<b>TD30/70</b>	30% / 70% / 100% Tri-Level Step dim
				<b>TDXX/YY</b>	XX% / YY% / 100% Tri-Level Step dim (Specify XX, YY : 10% ~ 70%)
				<b>LDE1</b>	Hi-lume 1% EcoSystem LED driver with Soft-on, Fade-to-Black dimming technology, 100% ~ 1% dim
				<b>ELV</b>	ELV compatible (reverse-phase or trailing-edge), (120V only)
				<b>TRIOT</b>	Tridonic IoT ready, 1-100% dim via Smart Module Interface (SMI), automated dimming/lighting controls via Enlighted Sensor Interface
				<b>DTO</b>	0-10V DIM-TO-OFF
				<b>DIMT</b>	Tri-mode dimming (Triac, ELV, 0-10V)
				<b>BLT</b>	Bluetooth Mesh System (contact factory for more information)

RONDO2-UD

OPTIONS		LIGHTING CONTROL SYSTEM	
EMG8	1296 LUMEN EM Battery Backup (CEC Compliant EM) <sup>9, 11</sup>	LUTRON VIVE	<Lutron Vive System Enabled>  Click Here!
EMG15	2430 LUMEN EM Battery Backup (CEC Compliant EM) <sup>9, 11</sup>		
EMG20	3240 LUMEN EM Battery Backup (CEC Compliant EM) <sup>9, 11</sup>	CASAMBI	Contact factory for CASAMBI READY options
EMG25	4050 LUMEN EM Battery Backup (CEC Compliant EM) <sup>9, 11</sup>		
GTD	Bodine Generator Transfer Device		
GTD10DIM	Bodine Generator Transfer Device (0-10VDC Dimmer Override)		
ARRA	Assembled in USA		
BAA	BAA(Buy American Act) compliant		
TAA	Trade Agreements Act compliant		
O7W	Optional 7 Years Limited Warranty <sup>5</sup>		
O10W	Optional 10 Years Limited Warranty <sup>5</sup>		
AMS	Bluetooth Mesh Wireless Sensor. Occupancy/Daylight/0-10V Dimming <sup>9</sup>		
LC	Non-lit 90° coupling		
TC	Non-lit T-shape coupling		
XC	Non-lit X-shape coupling		
LC-VD	Non-lit 90° vertical drop		
LC-BT	Non-lit 90° bottom		
TC-VD	Non-lit T-shape vertical drop		

- NOTES:
- 1. Specify only when Continuous Row Mount.
  - 2. No need to select, if same as row length and section length.
  - 3. Comes with 1pc 8ft lens.
  - 4. EM is installed in last 4' of luminaire sections. Separate section required 2SE or specified. Must specify voltage, not available with 347V.
  - 5. This limited warranty covers electrical parts only and does not apply to labor, equipment lease, or defect from improper installation or operation.
  - 6. Lumen per watt is around 15% less than standard CRI (80+).
  - 7. 347V cannot work with Emergency Battery Backup.
  - 8. Contact factory for other emergency ballast options.
  - 9. With TDM/ELV/SDxx/TDxx driver: only available with line-voltage on/off occupancy sensor.
  - 10. Certain restrictions apply such as wattage and length, please contact factory.
  - 11. Up to 4ft: the EM may be remote mounted due to limited space. Remote box provided by others.
  - 12. Available with C9 (90 CRI) only.
  - 13. May not be available when ordered with EM battery backup due to limited space. Please contact factory for details.
  - 14. (2) power feed is standard.



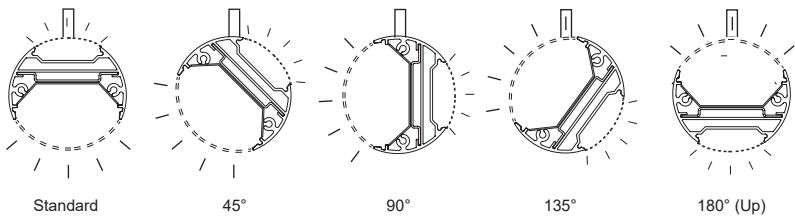
REMOTE BOX DETAILS (\*Provided)



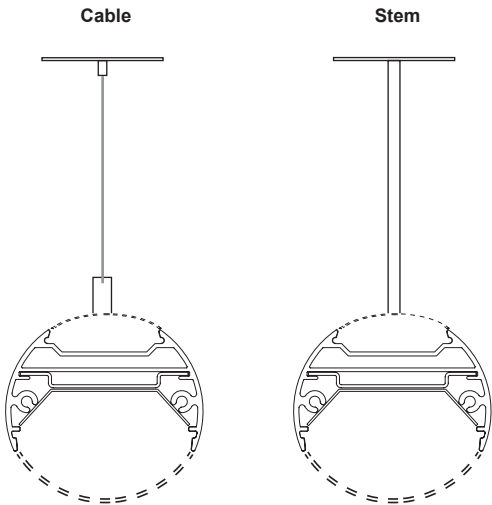
\* All dimensions are in inches (millimeters).

# RONDO2-UD

\*Fixture can be customized: angle 45°, 90°, 135°, 180° (up light).  
\*Field adjustable using allen key (provided).



WALL MOUNT

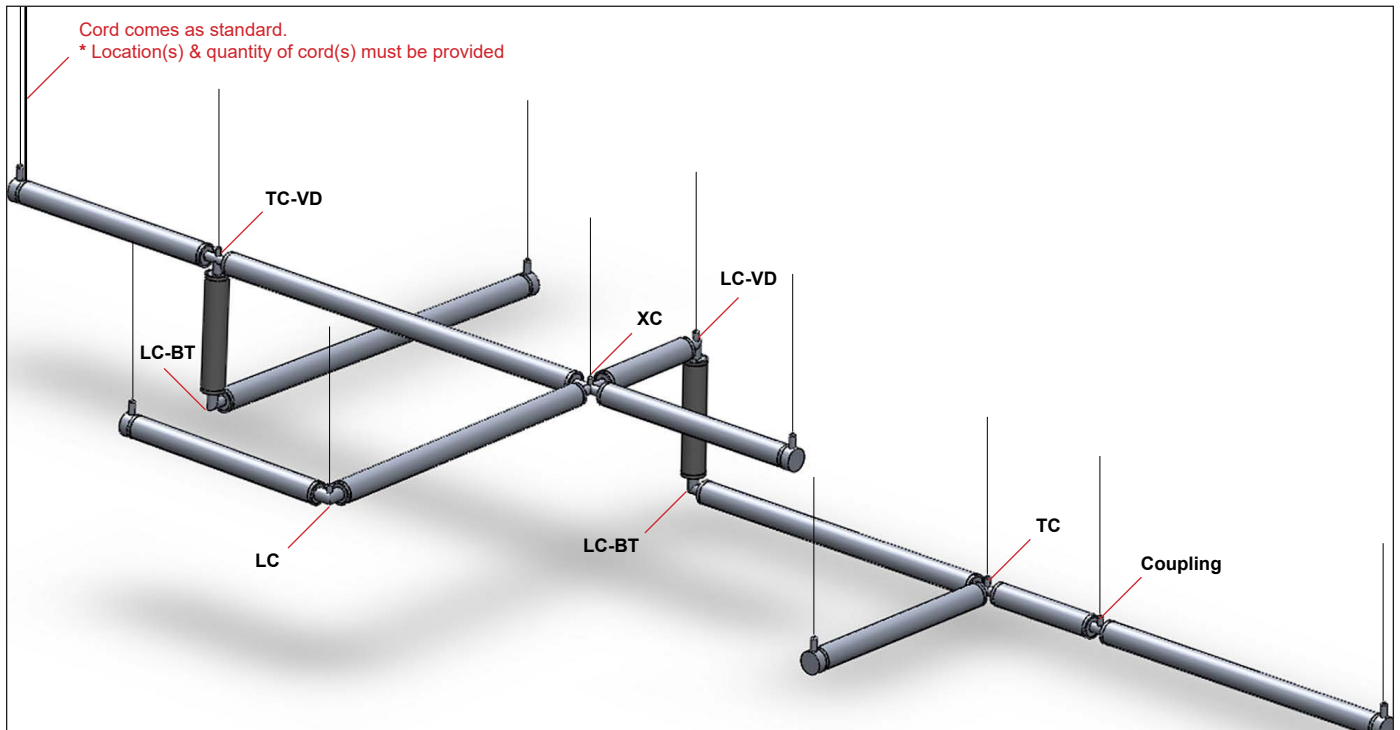
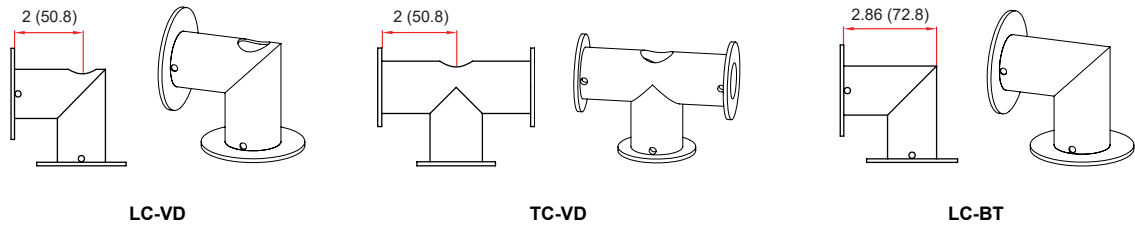


Lutron Vive Integral  
fixture control installation

\*Compatible with 3/8" pipe stem (optional)

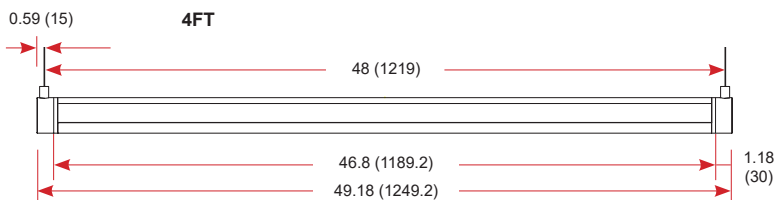
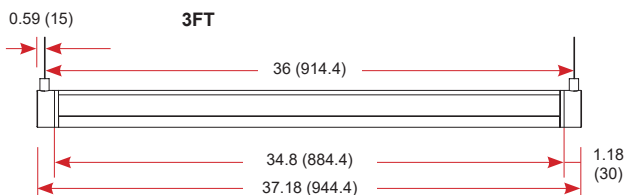
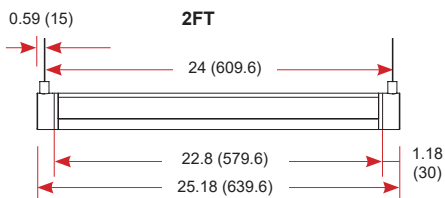
WEIGHT

Item	lbs	kg
RONDO2-2	6.08	2.75
RONDO2-3	7.01	3.2
RONDO2-4	7.76	3.5
RONDO2-8	12.88	5.84

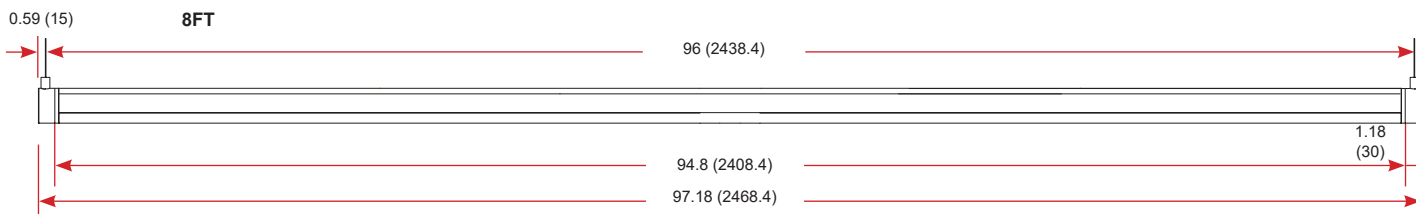


# RONDO2-UD

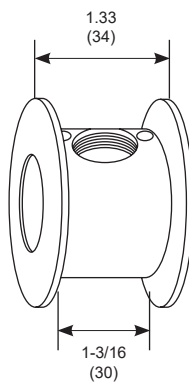
Rotational LED



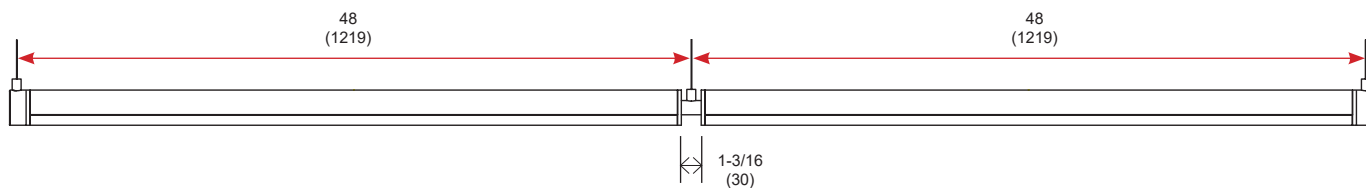
All dimensions are in inches (millimeters).



Coupling



Coupling for continuous run



Total run = 97.05 (2465)

Calculation:  $(1245-30) \times 2 + 30 = 2460$

\* Recommended to calculate in mm. for precised measurement.

Model #	Brand	Compatible Dimmer Switch			
(Blank)	-	<Leviton>	IlumaTech IP7 series		
		<Lutron>	Visit <a href="http://www.lutron.com/advance">www.lutron.com/advance</a> for a list of dimmers (Mark VII) that will work with this driver.		
		<Philips>	Sunrise : SR1200ZTUNV		
ES566	eldoLED SOLOdrive	<Busch-Jaeger>	2112U-101		
		<Jung>	240-10		
		<Leviton>	IlumaTech - IP710-DLX		
		<Lightoller Controls>	ZP600FAM120		
		<Merten>	5729		
		<Pass & Seymour>	CD4FB-W		
		<Wattstopper>	DCLV1		
		<Sensor Switch>	nIO EZ		
		<Synergy>	ISD BC		
		<ABB>	SD/S 2.16.1		
		<Lutron>	Nova T: NTFTV Diva - DDTV-xx, NFTV GRAFIK Eye: GRX-TVI w GRX3503 Energy Savr Node: QSN-4T16-S TM2 Module		
		<Crestron>	GLX-DIMFLV8, GLXP-DIMFLV8, GLPAC-DIMFLV4-*, GLPAC-DIMFLVV8-*, GLPP-DIMFLVEX-PM, GLPP-1DIMFLV2EX-PM, GLPP-1DIMFLV3EX-PM, DIN-AO8, DIN-4DIMFLV4, CLS-EXP-DIMFLV, CLCI-1DIMFLV2EX		
		LDE1	Lutron Hi-lume 1% EcoSystem	<Lutron>	PowPak Dimming Modules: RMJ-ECO32-DV-B, FCJ/FCJS-ECO <sup>1,2</sup> Energi Savr Node (120V only): QSN-1ECO-S, QSN-2ECO-S GRAFIK Eye QS/Homeworks QS control unit (120V only): QSGRJ-_E(wireless) QSGR-_E Quantum Hub (120V only): QP2-_ ,2C/4C/6C/8C Homeworks QS/myRoom Plus power module (120V only): LQSE-2ECO-D
		PHSR <sup>3</sup>	Philips Xitanium Sensor-Ready	<Ilumra>	<u>Single Rocker Self-Powered Light Switch (on/off, dim-up/down)</u> Ilumra# ZBT-S1AWH Digi-Key# 1082-1033-ND <u>Dual Rocker Self-Powered Light Switch (on/off, dim-up/down, scene1,2)</u> Ilumra# ZBT-S2AWH Digi-Key# 1082-1034-ND
TDM	KEYSTONE	<Lutron>	Diva DV-600P, SkyLark S-600P, Ariadni AY-600P, Ariadni TG-603P, Maestro MA-600 (Digital), Diva CFL/LED DVCL-153P, Satin Colors DVSC-600P-SW		
		<Leviton>	6641, IlumaTech IPI06-1LX, ToggleTouch TGI06-1LW (Digital)		
ELV	KEYSTONE	<Lutron>	MAELV-600BL (Digital), DVELV-300P, SkyLark SELV-300P		

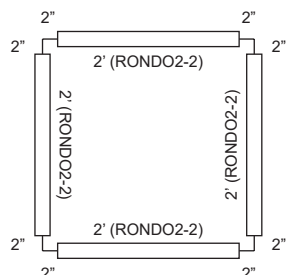
1. All devices connected to one FCJ/FCJS-ECO will be controlled together. Devices will dim to the same level as the result of a control command.  
For more detail on adjusting low-end light level refer to Application Note#556 at [www.lutron.com](http://www.lutron.com).
2. For the Line/Hot (L/H) terminal on the driver, it is preferred not to use the switched hot (red) wire from the control but rather the hot wire directly from the power source.
3. Recommended for EasySense System.



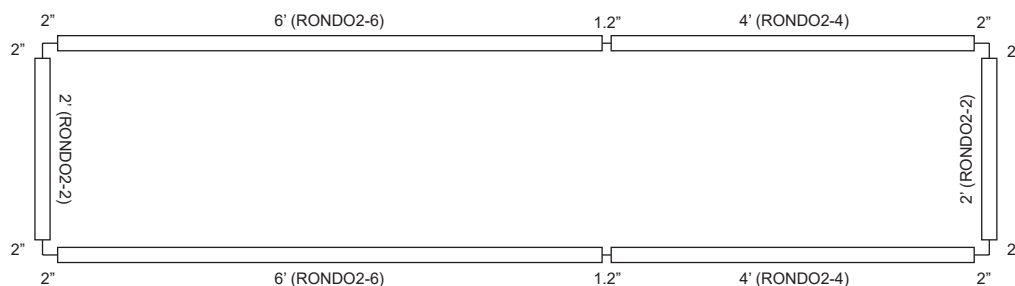
# RONDO2-UD

## RONDO2-SQ examples (Measurement from center point)

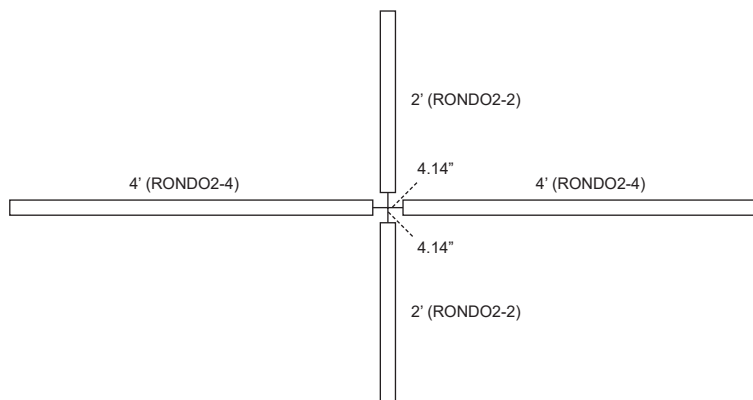
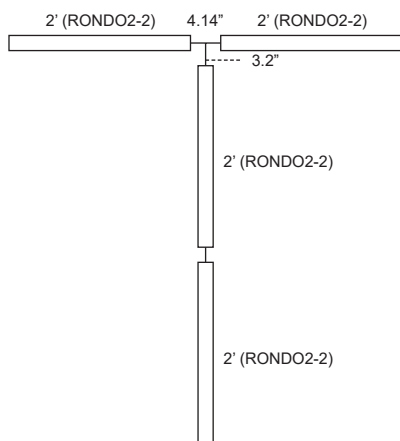
### 2'4"-2'4" (Minimum)



### 10'5.2"-2'4" (Minimum)



## RONDO2-CM examples (Measurement from center point)



## RONDO2 NON-LIT CONNECTOR PATTERNS

**Instruction:**

- Provide sketches illustrating corner types and overall dimensions.
- Must provide the power location in the drawing.
- Utopia Lighting will decide the optimal fixture combination unless otherwise specified in the drawing