

# SBW-2G LED

## INSTALLATION INSTRUCTIONS



### BEFORE YOU BEGIN

Read and follow all safety instructions



### WARNING

#### RISK OF FIRE, EXPLOSION AND ELECTRIC SHOCK

- This product should be installed, inspected, and maintained by a qualified electrician only, in accordance with the NEC (National Electric Code) and all local codes.
  - Turn off electrical power before inspection, installation or removal.
  - Use only UL (or other NRTL) approved wire for input/output connections.
  - Make sure LEDs and drivers are cool to touch when performing maintenance.
- Make sure the supply voltage is the same as the rated voltage of the luminaire.
- Do not install in a hazardous atmosphere, except where the ambient temperature does not exceed the rated operating temperature of the fixture.
  - Keep tightly closed when in operation



### Prepare Electrical Wiring



#### Electrical Requirements

Must check if the local voltage range is correspond with the working voltage of the fixture. Use min. 75°C supply.



#### Grounding Instructions

The grounding and bonding of the overall system shall be done in accordance with NEC Article 600 and local codes.



Follow all applicable safety procedures and use Personal Protective Equipment such as hardhats, safety glasses, reflective vest, electrical safety gloves, fall protection equipment and safety toe boots during the installation, operation, and maintenance of the luminaire.



866-471-7711  
utopialighting.com  
support@utopialighting.com

Contractor is responsible for adequately reinforcing ceilings to support luminaire weight. Utopia Lighting accepts no responsibility for inadequately reinforced ceilings. The information contained in this drawing is the sole property of Utopia Lighting. Any reproduction in part or whole is prohibited and warranty is voided.



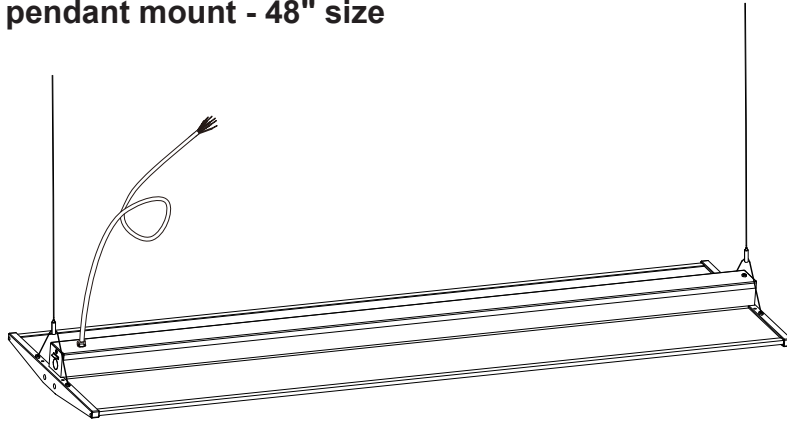
WARNING:

RISK OF FIRE AND ELECTRICAL SHOCK. FIXTURE MUST BE INSTALLED BY A QUALIFIED ELECTRICIAN ONLY IN ACCORDANCE WITH NATIONAL, LOCAL BUILDING AND ELECTRICAL CODES. DISCONNECT POWER AT ELECTRICAL PANEL BEFORE SERVICING.

# SBW-2G LED

INSTALLATION INSTRUCTIONS

AC pendant mount - 48" size



## IMPORTANT

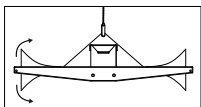
1. Read all instructions.
2. Install in accordance with national and local electrical code regulations.
3. This product is intended to be installed and serviced by a qualified, licensed electrician.
4. Do not install in wet locations. For dry and damp use only.
5. Turn off electrical power before installing or servicing fixture in any way.
6. To reduce the risk of fire and overheating, make sure all connections are tight.
7. Under no circumstances can the lighting fixture be covered with heat insulation gasket or similar materials.
8. Seamless continue runs per power feed: Up to 10pcs in 120V AC, 20pcs in 277V AC.

## ATTENTION



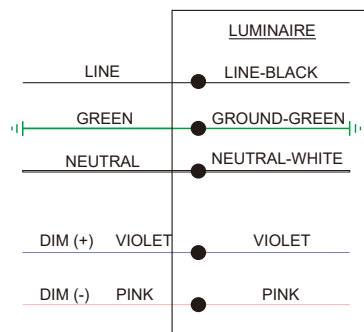
### SHOCK HAZARD!

May result in serious injury or death.  
Turn power OFF at circuit breaker prior to installation or servicing.



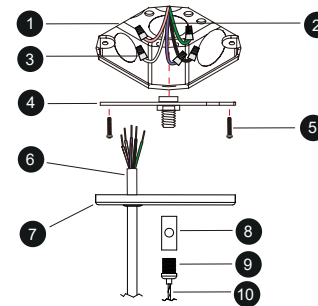
Once final building cleanup has been completed, remove remaining lens protective film.

## WIRING

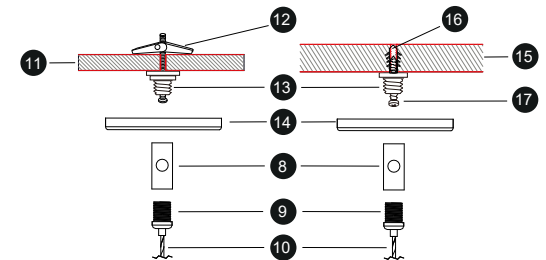


## Installation In Dry Ceiling

### POWER FEED

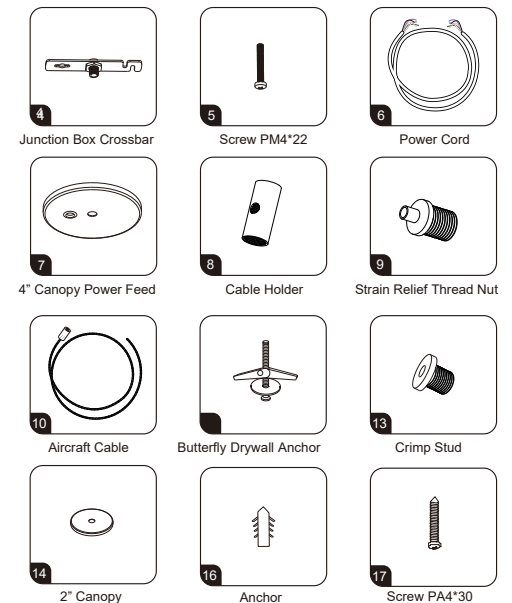


### NON POWER SUSPENSION



### PARTS LIST

- 1 4" Octagon Junction Box (By Others)
- 2 Power Cord (By Others)
- 3 Wire Nut
- 4 Junction Box Crossbar
- 5 Screw PM4\*22
- 6 Power Cord
- 7 4" Power Canopy Kit
- 8 Cable Holder
- 9 Strain Relief Thread Nut
- 10 Aircraft Cable
- 11 Drywall Ceiling (By Others)
- 12 Butterfly Drywall Anchor
- 13 Crimp Stud
- 14 2" Canopy
- 15 Solid Ceiling (By Others)
- 16 Anchor
- 17 Screw PA4\*30



866-471-7711  
utopialighting.com  
support@utopialighting.com

Contractor is responsible for adequately reinforcing ceilings to support luminaire weight. Utopia Lighting accepts no responsibility for inadequately reinforced ceilings. The information contained in this drawing is the sole property of Utopia Lighting. Any reproduction in part or whole is prohibited and warranty is voided.

WARNING:



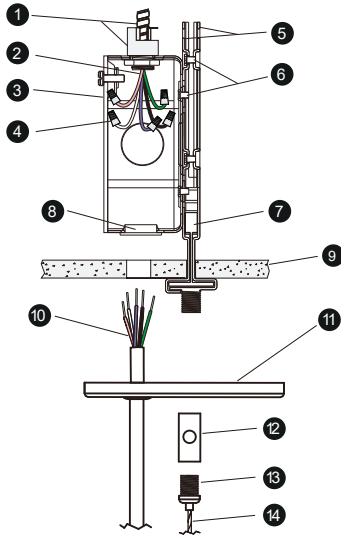
RISK OF FIRE AND ELECTRICAL SHOCK. FIXTURE MUST BE INSTALLED BY A QUALIFIED ELECTRICIAN ONLY IN ACCORDANCE WITH NATIONAL, LOCAL BUILDING AND ELECTRICAL CODES. DISCONNECT POWER AT ELECTRICAL PANEL BEFORE SERVICING.

# SBW-2G LED

## INSTALLATION INSTRUCTIONS

### Installation in Drop ceiling

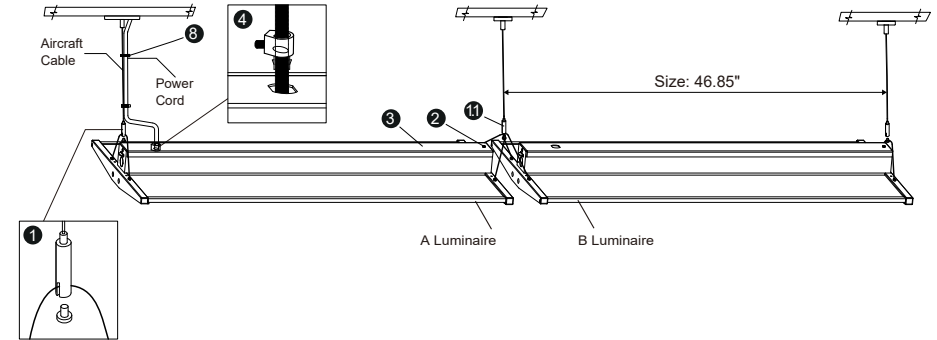
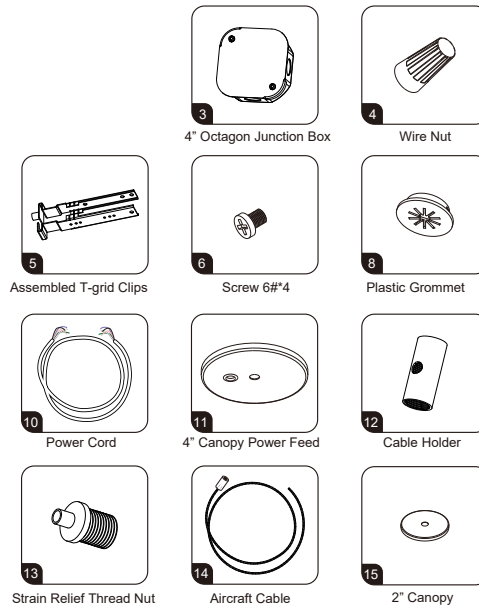
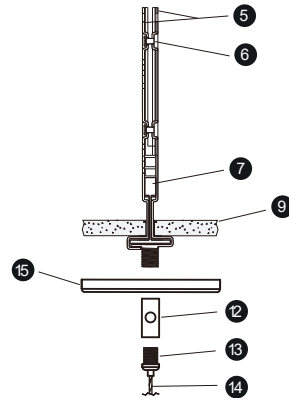
#### ►► POWER FEED



#### ►► PARTS LIST

- 1 Armored Cable & Connector (By Others)
- 2 Power Cord (By Others)
- 3 4" Octagon Junction Box
- 4 Wire Nut
- 5 Assembled T-grid Clips
- 6 Screw 6#\*4
- 7 T-grid (By Others)
- 8 Plastic Grommet
- 9 Ceiling Tile (By Others)
- 10 Power Cord
- 11 4" Canopy Power Feed
- 12 Cable Holder
- 13 Strain Relief Thread Nut
- 14 Aircraft Cable
- 15 2" Canopy

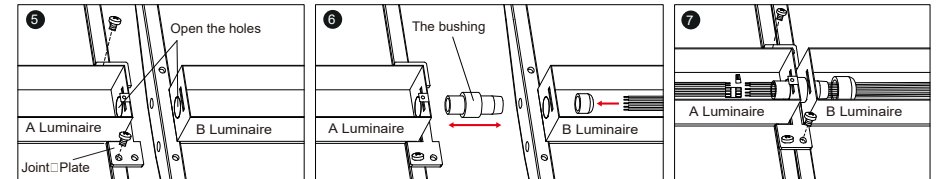
#### ►► NON POWER SUSPENSION



### Installation Step

1. Fix the aircraft cable to the luminaire with screws provided 1. If joining, fix the aircraft cable to both luminaires with screw as shown 11.
2. Open the driver box 2 3. Put through the power cord to the driver box cover and fix 4.
3. Make wiring connections.

#### For continuous run:



Knock-off the holes. Fix the Joint plate on A luminaire with screws.

Connect the both luminaires together with the bushing.

Put through the power cord of B luminaire to the A luminaire, then connect the wires properly. Fix the Joint plate on B luminaire with screws.

4. Adjust the height of luminaire. Zip tight power cord & aircraft cable with the cable tie 4. Close the driver box.



Adjust the height of luminaire. Luminaire can be raised by pulling cable through the gripper and can be lowered by depressing the top cylinder on the gripper which pulls the luminaire down.

#### WARNING:



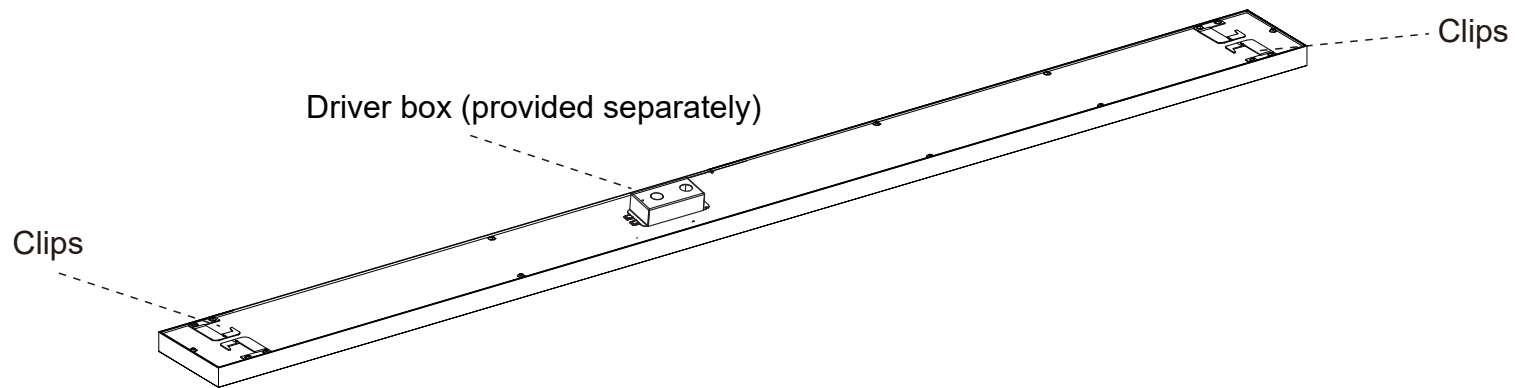
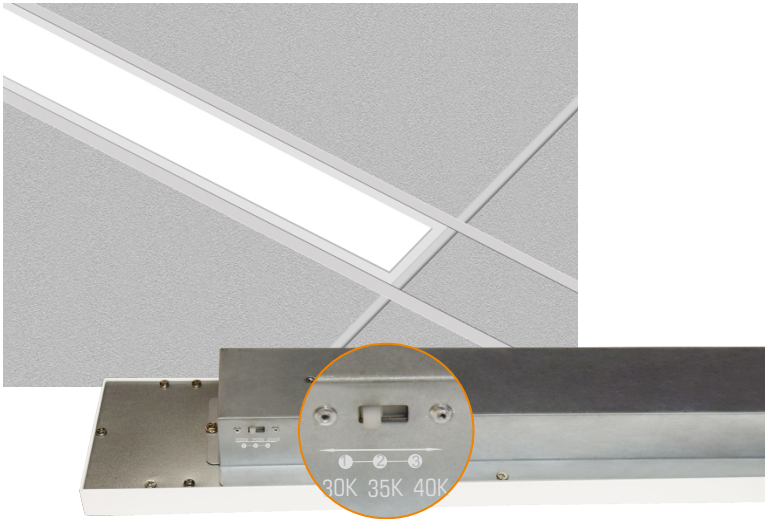
RISK OF FIRE AND ELECTRICAL SHOCK. FIXTURE MUST BE INSTALLED BY A QUALIFIED ELECTRICIAN ONLY IN ACCORDANCE WITH NATIONAL, LOCAL BUILDING AND ELECTRICAL CODES. DISCONNECT POWER AT ELECTRICAL PANEL BEFORE SERVICING.



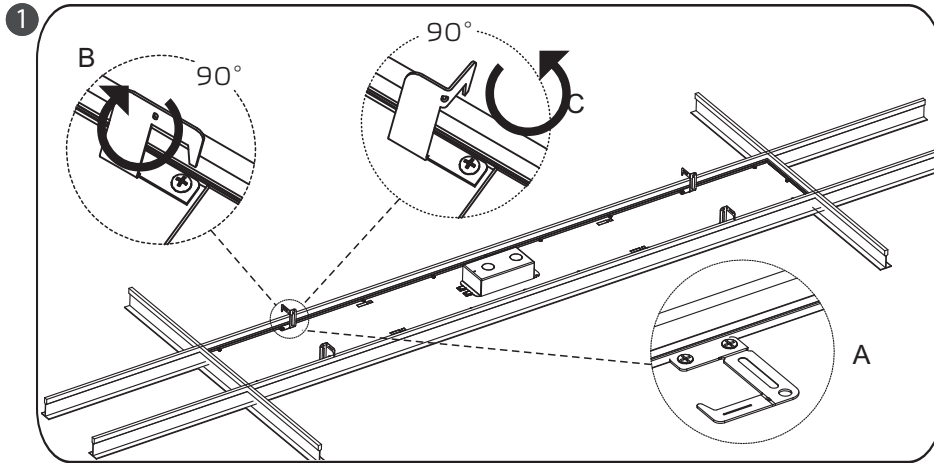
866-471-7711  
utopialighting.com  
support@utopialighting.com

Contractor is responsible for adequately reinforcing ceilings to support luminaire weight. Utopia Lighting accepts no responsibility for inadequately reinforced ceilings. The information contained in this drawing is the sole property of Utopia Lighting. Any reproduction in part or whole is prohibited and warranty is voided.

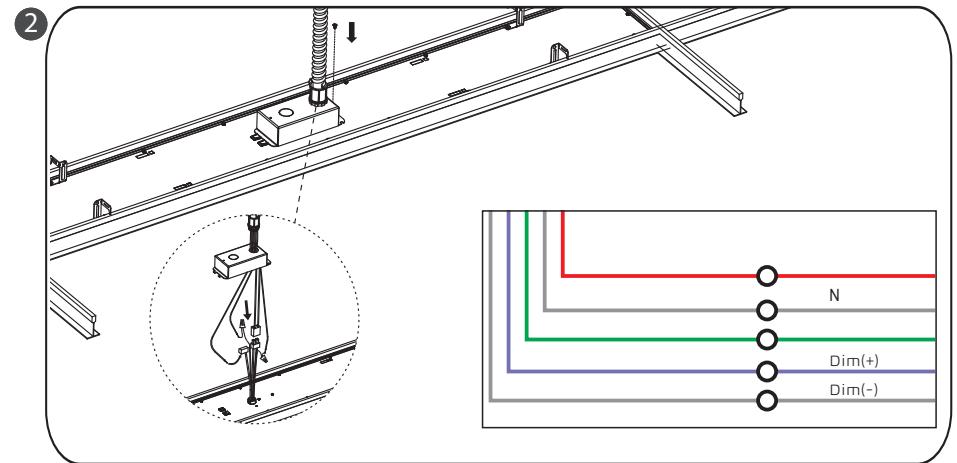
### Recessed mount installation



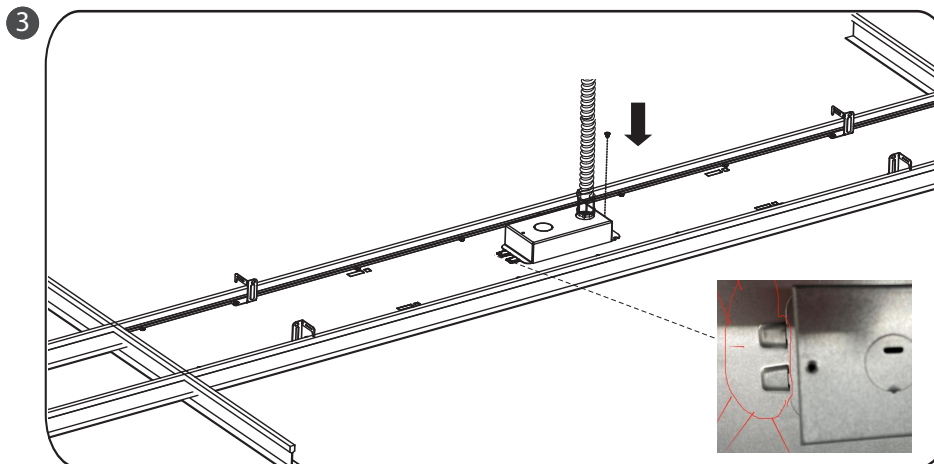
### Recessed mount installation



1) Place the fixture, bend clips and install the fixture.



2) Make proper wire connections (junction box is provided separately).



3) Insert one side of the junction box into two slots, screw it down to fix the junction box.

