

# EMRL1



## FEATURES:

- 6" recessed housing with mounting bar hangers.
- Impact-resistant thermoplastic adjustable gimbal trim.
- Off White or black trim securely attached to housing with spring clips.

## MOUNTING:

- Compatible with drop ceiling mount installations. Bar hangers included.

## ELECTRICAL:

- 120/277V dual voltage operation standard. Isolating transformer.
- Junction box with 3/4" knockouts for AC input.
- Charge rate/power "ON" LED indicator light and push-to-test switch for mandated code compliance testing.
- LVD (Low Voltage Disconnect) prevents battery from deep discharge.

## LAMPS:

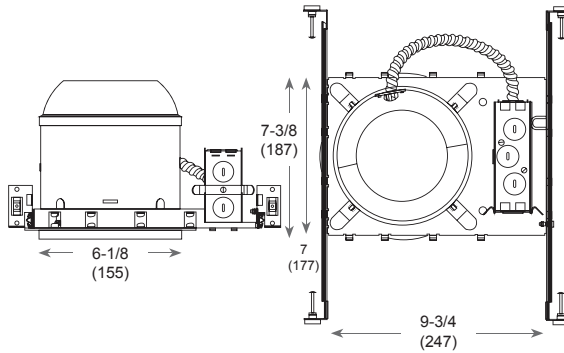
- Adjustable ultra bright 8W bi-pin halogen lamp in a gimbal trim.
- Sealed beam PAR36-type gimbal trim with smooth chrome-plated metallized reflector and plastic lens offers optimal light distribution.
- Optional: 1.5W LED lamp.

## BATTERY:

- Maintenance-free, 6V 4.5Ah, sealed lead acid rechargeable battery on emergency (EM) units.
- Fully automatic solid-state, two-rate charger initiates battery charging to recharge a discharged battery in 24 hours.
- Internal solid-state transfer switch automatically connects the internal battery to LEDs for minimum 90 minute emergency illumination.

## LISTING:

- 5 year warranty on all electronics and housing. Battery prorated for 2 years.
- Meets UL924, NFPA 101 Life Safety Code, NEC, OSHA, Local and State Codes.
- UL listed for dry locations (25°C / 77°F).



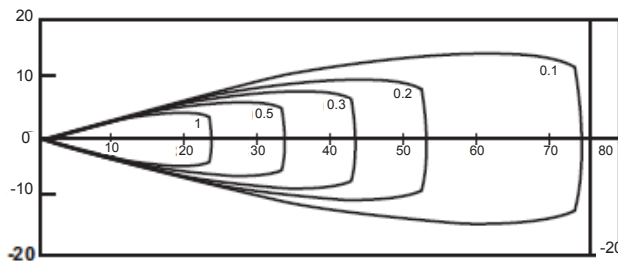
## Dimensions

A: Housing Height: 7 (177)  
B: Ceiling Cutout: 6-1/8 (155)  
C: Trim O.D.: 6-1/8 (155)

All dimensions are in inches (millimeters).

## PHOTOMETRIC

6V 8W HALOGEN LAMP



## ORDERING INFORMATION

EXAMPLE: EMRL1-WH

MODEL	GIMBAL COLOR		OPTIONS	
EMRL1	WH	Off White	(Blank)	8W Halogen Lamp
	BK	Black	LED	1.5W LED Lamp