



BEFORE YOU BEGIN

Read and follow all safety instructions



WARNING

RISK OF FIRE, EXPLOSION AND ELECTRIC SHOCK

- This product should be installed, inspected, and maintained by a qualified electrician only, in accordance with the NEC (National Electric Code) and all local codes.
 - Turn off electrical power before inspection, installation or removal.
 - Use only UL (or other NRTL) approved wire for input/output connections.
 - Make sure LEDs and drivers are cool to touch when performing maintenance.
- Make sure the supply voltage is the same as the rated voltage of the luminaire.
- Do not install in a hazardous atmosphere, except where the ambient temperature does not exceed the rated operating temperature of the fixture.
 - Keep tightly closed when in operation



Prepare Electrical Wiring



Electrical Requirements

Must check if the local voltage range is correspond with the working voltage of the fixture. Use min. 75°C supply.



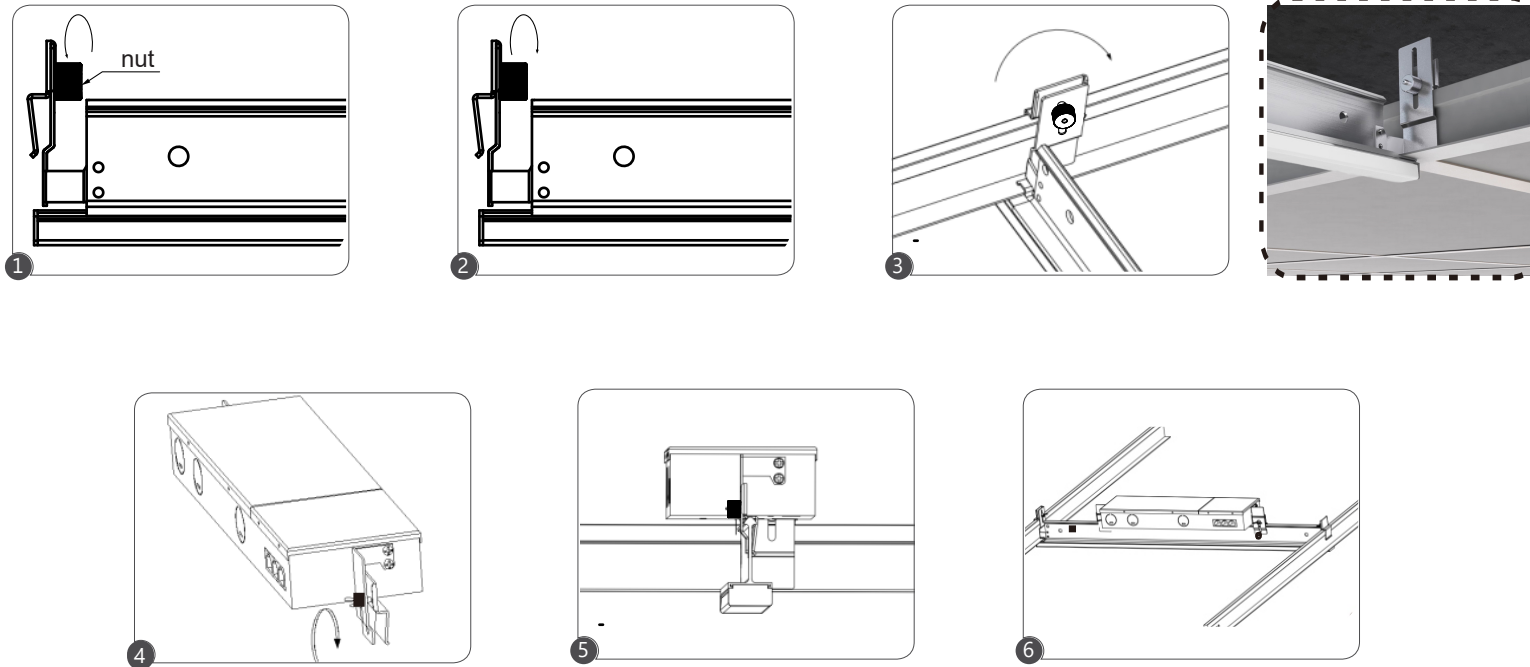
Grounding Instructions

The grounding and bonding of the overall system shall be done in accordance with NEC Article 600 and local codes.



Follow all applicable safety procedures and use Personal Protective Equipment such as hardhats, safety glasses, reflective vest, electrical safety gloves, fall protection equipment and safety toe boots during the installation, operation, and maintenance of the luminaire.



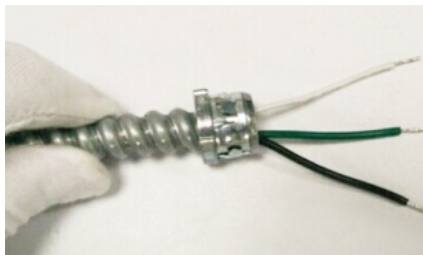
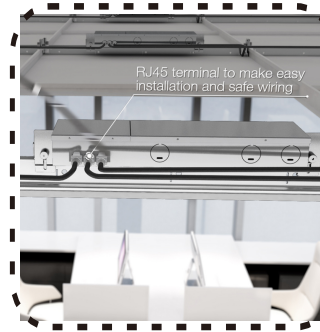
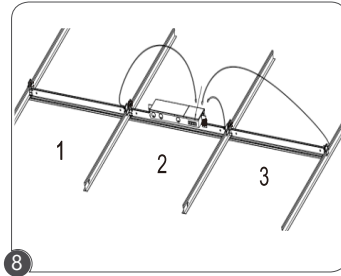
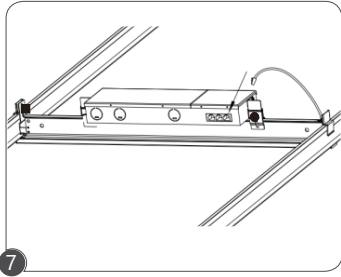


1. Unlock a terminal nut at each end of the fixture [Fig.1].
2. Install the fixture to ceiling grid and tighten two terminal nuts again [Fig.2,3].
3. Unlock the nuts from both end of the junction box [Fig.4].
4. Secure the junction box to the linear fixture and tighten it [Fig.5,6].

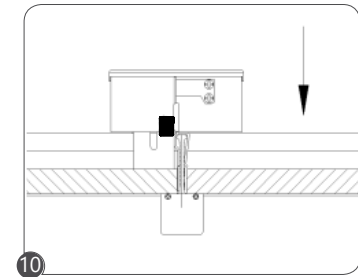
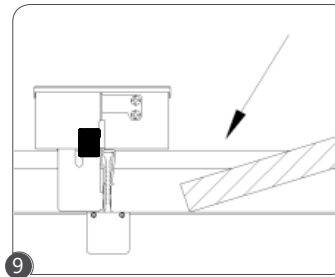


TBL LED

INSTALLATION INSTRUCTIONS



- White for "N"
- Green for ground wire
- Black for "L"



5. Connect the connector (RJ45) from the fixture to the junction box [Fig.7,8].

* 3 fixtures per driver box, remote distance limit:

2FT fixture: 6FT RJ45 cable

4FT fixture: 8FT RJ45 cable

6. Open the junction box and make wiring connection, connect purple and gray for dimming application.

7. Cover the plasterboard to finish installation and ensure there is no gap between the plasterboard and the fixture [Fig.9,10].



866-471-7711
utopialighting.com
info@utopialighting.com

Contractor is responsible for adequately reinforcing ceilings to support luminaire weight. Utopia Lighting accepts no responsibility for inadequately reinforced ceilings. The information contained in this drawing is the sole property of Utopia Lighting. Any reproduction in part or whole is prohibited and warranty is voided.

WARNING:

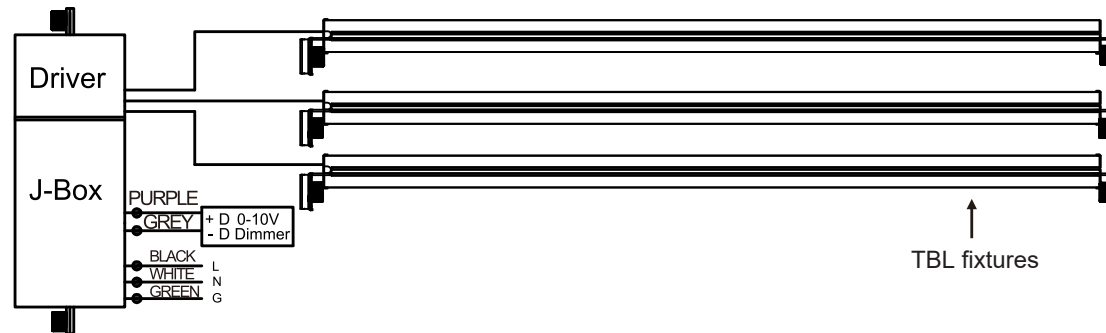


RISK OF FIRE AND ELECTRICAL SHOCK. FIXTURE MUST BE INSTALLED BY A QUALIFIED ELECTRICIAN ONLY IN ACCORDANCE WITH NATIONAL, LOCAL BUILDING AND ELECTRICAL CODES. DISCONNECT POWER AT ELECTRICAL PANEL BEFORE SERVICING.

TBL LED

INSTALLATION INSTRUCTIONS

WIRING DIAGRAM



866-471-7711
utopialighting.com
info@utopialighting.com

Contractor is responsible for adequately reinforcing ceilings to support luminaire weight. Utopia Lighting accepts no responsibility for inadequately reinforced ceilings. The information contained in this drawing is the sole property of Utopia Lighting. Any reproduction in part or whole is prohibited and warranty is voided.

WARNING:



RISK OF FIRE AND ELECTRICAL SHOCK. FIXTURE MUST BE INSTALLED BY A QUALIFIED ELECTRICIAN ONLY IN ACCORDANCE WITH NATIONAL, LOCAL BUILDING AND ELECTRICAL CODES. DISCONNECT POWER AT ELECTRICAL PANEL BEFORE SERVICING.